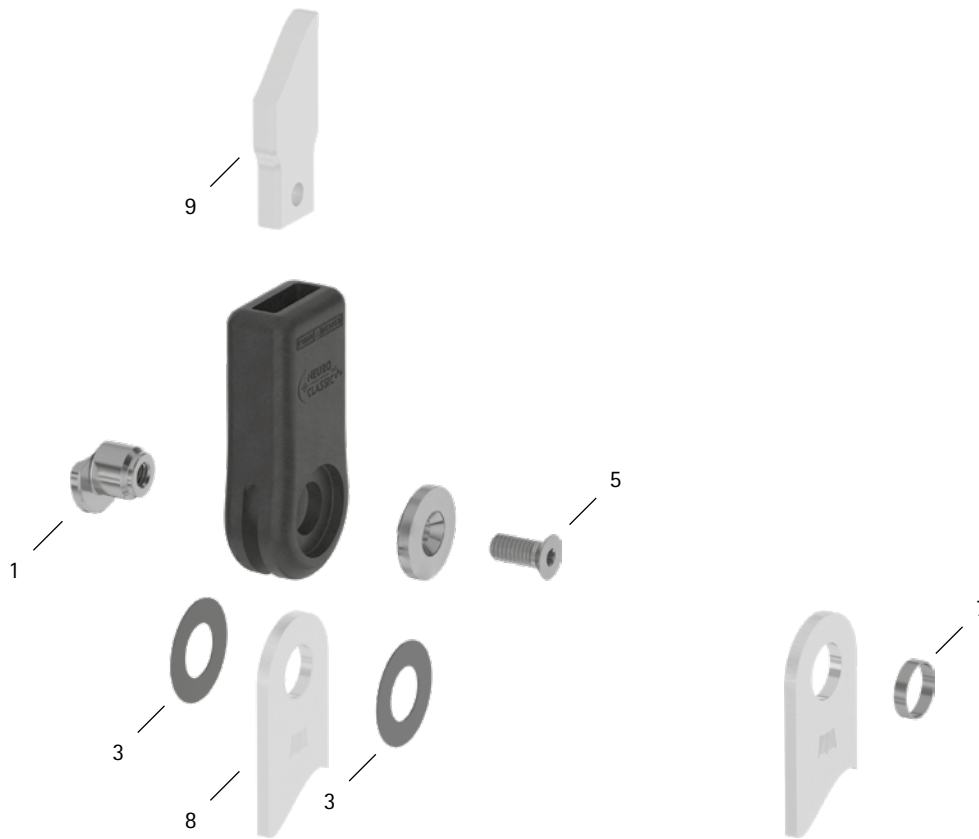


patient commission/configuration ID _____



Item	16mm	Description	Potential Problem	Measure	Recommended Inspection, Potential Replacement*	Latest Replacement after
System Joint						
1	SF0593-C/1	bearing nut	wear	replacing	every 6 months	36 months
3	GS2413-040	sliding washer, $\varnothing = 24\text{mm}$	wear	replacing	every 6 months	18 months
3	GS2413-045					
3	GS2413-050					
3	GS2413-055					
3	GS2413-060					
5	SC1406-L14	countersunk flat head screw with hexalobular socket	wear	replacing	every 6 months	36 months
System Stirrups, System Anchors and System Side Bars						
7	BR1312-L030	sliding bushing	wear	replacing	every 6 months	18 months
8	see catalogue	system stirrup	wear or breakage	replacing	every 6 months	48 months
9	see catalogue	system anchor and system side bar	wear or breakage	replacing	every 6 months	if required

* depending on the assessment of the distributor of the custom-made product regarding the patient's usage behaviour

WP0125-GB-2023-09