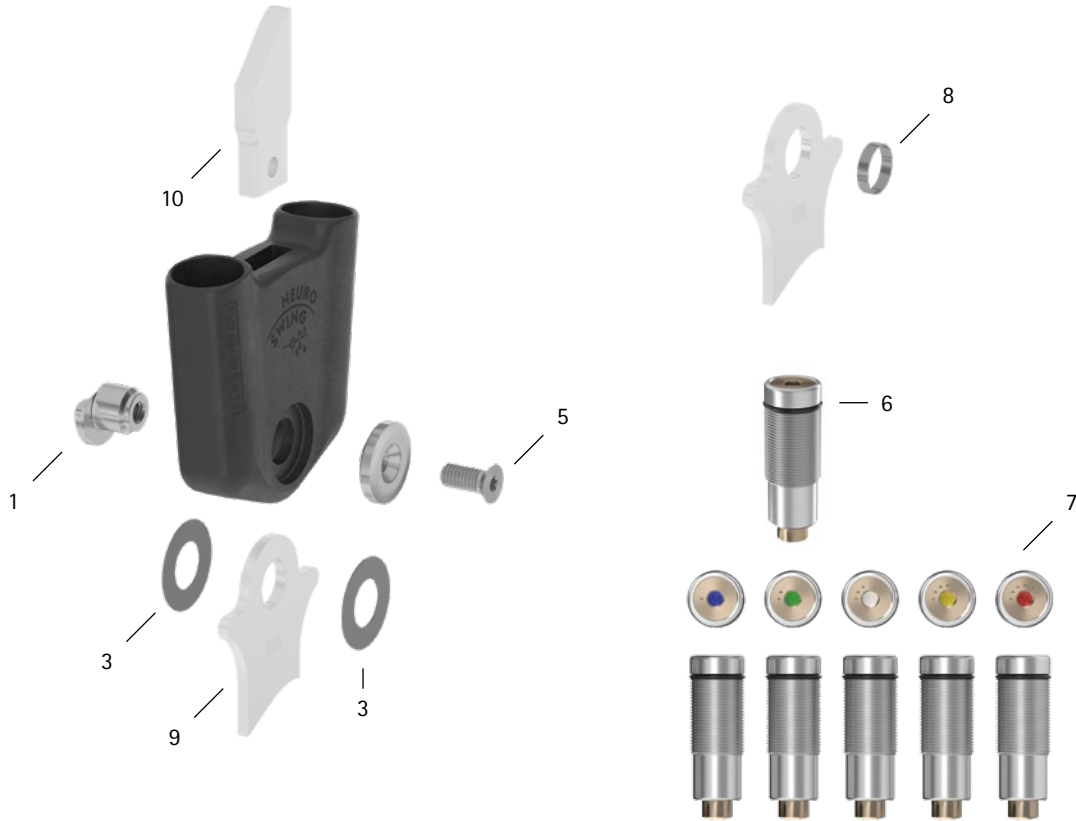


patient commission/configuration ID _____



| Item | 20mm | Description | Potential Problem | Measure | Recommended Inspection, Potential Replacement* | Latest Replacement after |
|-------------------------------------------------------------|----------------|------------------------------------------------------------|----------------------|-----------|------------------------------------------------|--------------------------|
| System Joint | | | | | | |
| 1 | SF0595-C/1 | bearing nut | wear | replacing | every 6 months | 36 months |
| 3 | GS2815-040 | sliding washer, Ø = 28mm | wear | replacing | every 6 months | 18 months |
| 3 | GS2815-045 | | | | | |
| 3 | GS2815-050 | | | | | |
| 3 | GS2815-055 | | | | | |
| 3 | GS2815-060 | | | | | |
| 5 | SC1406-L14 | countersunk flat head screw with hexalobular socket | wear | replacing | every 6 months | 36 months |
| Spring Units | | | | | | |
| 6 | VE3771-15/13 | O-ring for securing the spring unit | wear | replacing | every 6 months | 6 months |
| 7 | SF5805-C/15/18 | spring unit, blue, normal, max. 15° range of motion | noise of spring unit | replacing | every 6 months | 18 months |
| 7 | SF5805-C/15/25 | spring unit, green, medium, max. 15° range of motion | | | | |
| 7 | SF5805-C/10/40 | spring unit, white, strong, max. 10° range of motion | | | | |
| 7 | SF5805-C/10/60 | spring unit, yellow, very strong, max. 10° range of motion | | | | |
| 7 | SF5805-C/05/99 | spring unit, red, extra strong, max. 5° range of motion | | | | |
| System Stirrups, System Anchors and System Side Bars | | | | | | |
| 8 | BR1514-L030 | sliding bushing | wear | replacing | every 6 months | 18 months |
| 9 | see catalogue | system stirrup | wear or breakage | replacing | every 6 months | 48 months |
| 10 | see catalogue | system anchor and system side bar | wear or breakage | replacing | every 6 months | if required |

* depending on the assessment of the distributor of the custom-made product regarding the patient's usage behaviour

WP0068-GB-2023-01