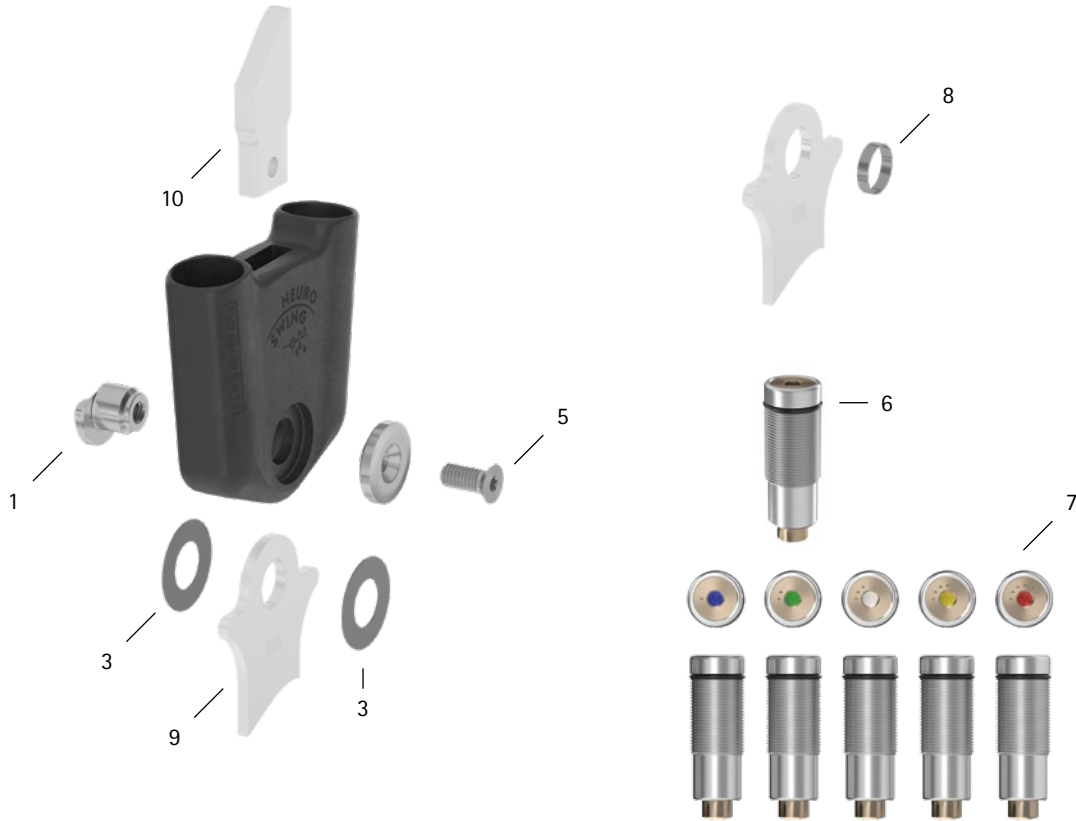


patient commission/configuration ID _____



Item	16mm	Description	Potential Problem	Measure	Recommended Inspection, Potential Replacement*	Latest Replacement after
System Joint						
1	SF0593-C/1	bearing nut	wear	replacing	every 6 months	36 months
3	GS2413-040	sliding washer, Ø = 24mm	wear	replacing	every 6 months	18 months
3	GS2413-045					
3	GS2413-050					
3	GS2413-055					
3	GS2413-060					
5	SC1406-L14	countersunk flat head screw with hexalobular socket	wear	replacing	every 6 months	36 months
Spring Units						
6	VE3771-12/12	O-ring for securing the spring unit	wear	replacing	every 6 months	6 months
7	SF5803-C/15/07	spring unit, blue, normal, max. 15° range of motion	noise of spring unit	replacing	every 6 months	18 months
7	SF5803-C/15/15	spring unit, green, medium, max. 15° range of motion				
7	SF5803-C/10/21	spring unit, white, strong, max. 10° range of motion				
7	SF5803-C/10/31	spring unit, yellow, very strong, max. 10° range of motion				
7	SF5803-C/05/63	spring unit, red, extra strong, max. 5° range of motion				
System Stirrups, System Anchors and System Side Bars						
8	BR1312-L030	sliding bushing	wear	replacing	every 6 months	18 months
9	see catalogue	system stirrup	wear or breakage	replacing	every 6 months	48 months
10	see catalogue	system anchor and system side bar	wear or breakage	replacing	every 6 months	if required

* depending on the assessment of the distributor of the custom-made product regarding the patient's usage behaviour

WP0067-GB-2023-01