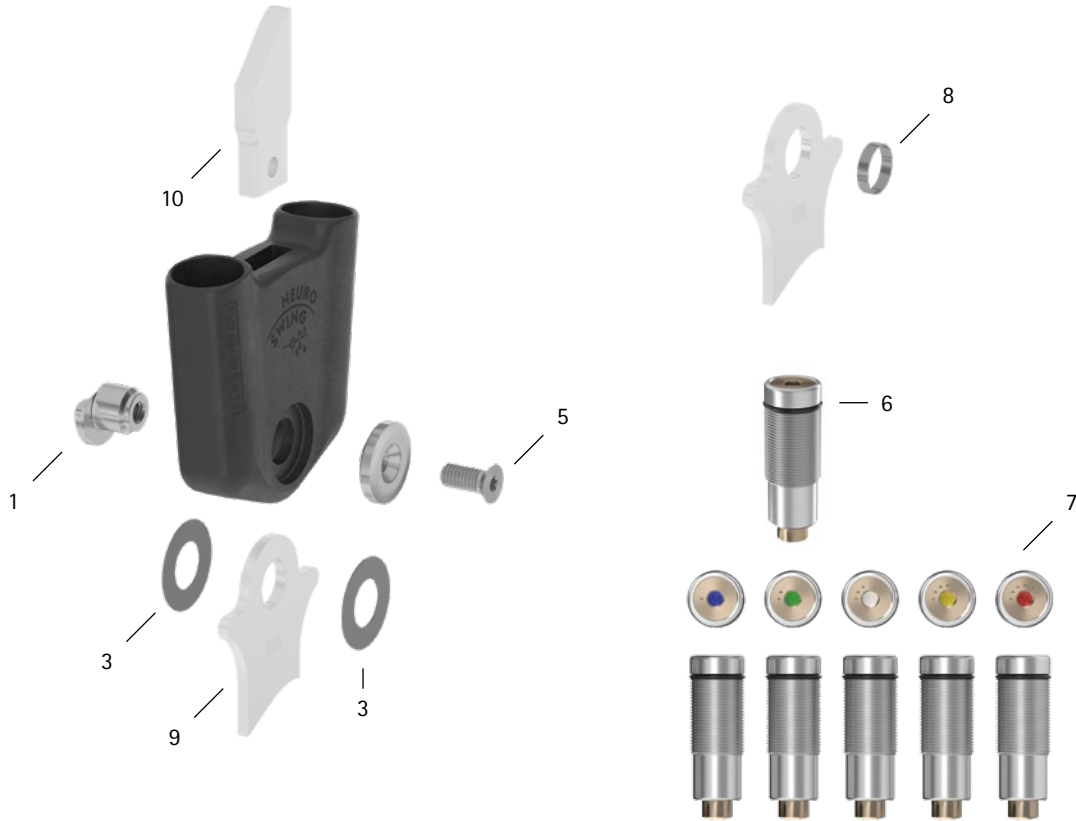


patient commission/configuration ID \_\_\_\_\_



Item	12mm	Description	Potential Problem	Measure	Recommended Inspection, Potential Replacement*	Latest Replacement after
<b>System Joint</b>						
1	SF0591-C/1	bearing nut	wear	replacing	every 6 months	36 months
3	GS1409-040	sliding washer, Ø = 14mm	wear	replacing	every 6 months	18 months
3	GS1409-045					
3	GS1409-050					
3	GS1409-055					
3	GS1409-060					
5	SC1404-L10	countersunk flat head screw with hexalobular socket	wear	replacing	every 6 months	36 months
<b>Spring Units</b>						
6	VE3771-085/13	O-ring for securing the spring unit	wear	replacing	every 6 months	6 months
7	SF5801-C/15/03	spring unit, blue, normal, max. 15° range of motion	noise of spring unit	replacing	every 6 months	18 months
7	SF5801-C/15/06	spring unit, green, medium, max. 15° range of motion				
7	SF5801-C/10/12	spring unit, white, strong, max. 10° range of motion				
7	SF5801-C/10/19	spring unit, yellow, very strong, max. 10° range of motion				
7	SF5801-C/05/33	spring unit, red, extra strong, max. 5° range of motion				
<b>System Stirrups, System Anchors and System Side Bars</b>						
8	BR1009-L020	sliding bushing	wear	replacing	every 6 months	18 months
9	see catalogue	system stirrup	wear or breakage	replacing	every 6 months	48 months
10	see catalogue	system anchor and system side bar	wear or breakage	replacing	every 6 months	if required

\* depending on the assessment of the distributor of the custom-made product regarding the patient's usage behaviour

WP0065-GB-2023-01