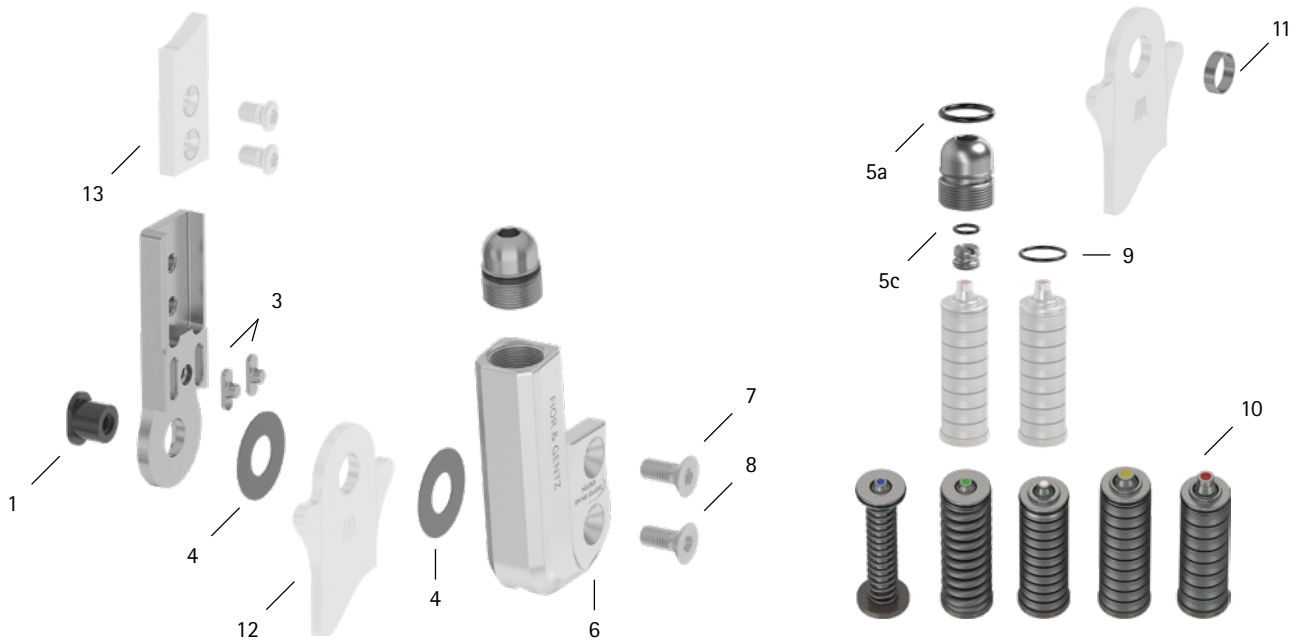
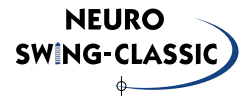


patient commission/configuration ID \_\_\_\_\_



Item	10mm	Description	Potential Problem	Measure	Recommended Inspection, Potential Replacement*	Latest Replacement after
<b>System Joint</b>						
1	SB6039-L0580	bearing nut	wear	replacing	every 6 months	36 months
3	SF0390-01	feather key with pin	breakage	replacing	every 6 months	36 months
4	GS1206-040	sliding washer, $\varnothing = 12\text{mm}$	wear	replacing	every 6 months	18 months
4	GS1206-045					
4	GS1206-050					
4	GS1206-055					
4	GS1206-060					
5a	VE3771-06/11	O-ring for securing the alignment screw**	wear	replacing	every 6 months	18 months
5c	VE3771-03/10	O-ring for securing the motion limiting screw**	wear	replacing	every 6 months	18 months
6	SH0160-2L/AL	cover plate, left lateral or right medial**	wear	replacing	every 6 months	36 months
6	SH0160-2R/AL	cover plate, left medial or right lateral**				
7	SC1403-L08	countersunk flat head screw with hexalobular socket**	wear	replacing	every 6 months	36 months
8	SC1403-L08	countersunk flat head screw with hexalobular socket (axle screw)**				
5-8	SH1970-L/AL	functional unit plug + go modularity, left lateral or right medial***	loss of function, wear	replacing	every 6 months	36 months
5-8	SH1970-L/AL	functional unit plug + go modularity, left medial or right lateral***				
<b>Spring Units</b>						
9	VE3771-045/10	O-ring for securing the spring unit	wear	replacing	every 6 months	18 months
10	SF5800-15/02	spring unit, blue, normal, max. 15° range of motion	radial move of disc springs	realigning disc springs with pliers	every 6 months	18 months
10	SF5800-15/04	spring unit, green, medium, max. 15° range of motion				
10	SF5800-10/06	spring unit, white, strong, max. 10° range of motion				
10	SF5800-10/09	spring unit, yellow, very strong, max. 10° range of motion	noise of spring unit	greasing spring unit with spray oil (article no. FT3000-15)		
10	SF5800-05/17	spring unit, red, extra strong, max. 5° range of motion				
<b>System Stirrups, System Anchors and System Side Bars</b>						
11	BP0706-L020	sliding bushing	wear	replacing	every 6 months	18 months
12	see catalogue	system stirrup	wear or breakage	replacing	every 6 months	48 months
13	see catalogue	system anchor and system side bar	wear or breakage	replacing	every 6 months	if required

\* depending on the assessment of the distributor of the custom-made product regarding the patient's usage behaviour

\*\* is part of the functional unit

\*\*\* included system components can be exchanged separately

WP0027-GB-2024-12