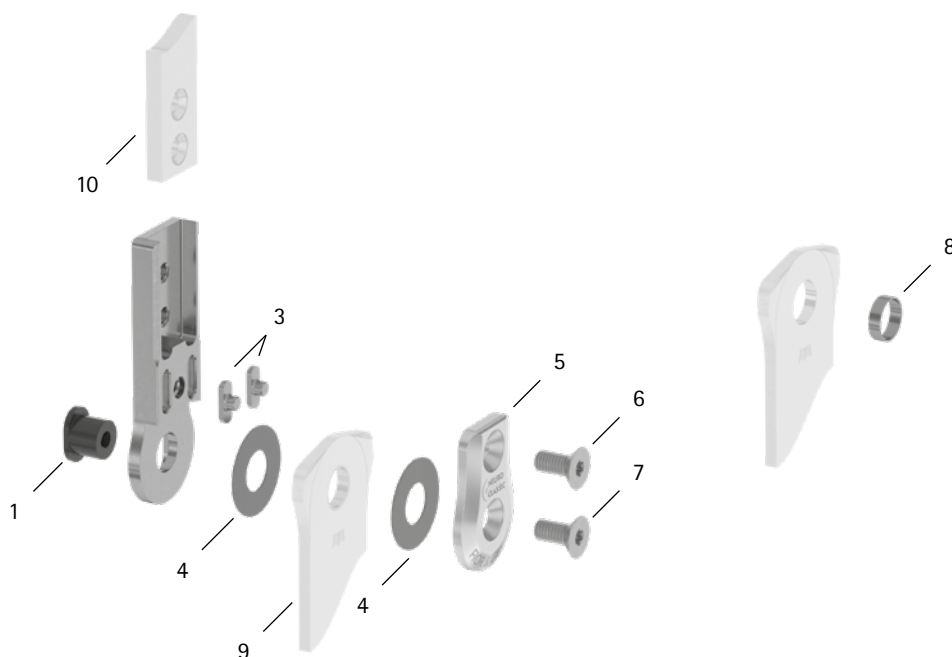


patient commission/configuration ID _____



Item	16mm	Description	Potential Problem	Measure	Recommended Inspection, Potential Replacement*	Latest Replacement after
System Joint						
1	SB9669-L0710	bearing nut, short**	wear	replacing	every 6 months	36 months
3	SF0393-02	feather key with pin	breakage	replacing	every 6 months	36 months
4	GS2210-040	sliding washer, Ø = 22mm	wear	replacing	every 6 months	18 months
4	GS2210-045					
4	GS2210-050					
4	GS2210-055					
4	GS2210-060					
5	SF0163-AL	cover plate**	wear	replacing	every 6 months	36 months
6	SC1405-L11	countersunk flat head screw with hexalobular socket**	wear	replacing	every 6 months	36 months
7	SC1405-L11	countersunk flat head screw with hexalobular socket (axle screw)**				
1, 5-7	SF1973-AL	functional unit plug + go modularity***	loss of function, wear	replacing	every 6 months	36 months
System Stirrups, System Anchors and System Side Bars						
8	BR1110-L030	sliding bushing	wear	replacing	every 6 months	18 months
9	see catalogue	system stirrup	wear or breakage	replacing	every 6 months	48 months
10	see catalogue	system anchor and system side bar	wear or breakage	replacing	every 6 months	if required

* depending on the assessment of the distributor of the custom-made product regarding the patient's usage behaviour

** is part of the functional unit

*** included system components can be exchanged separately