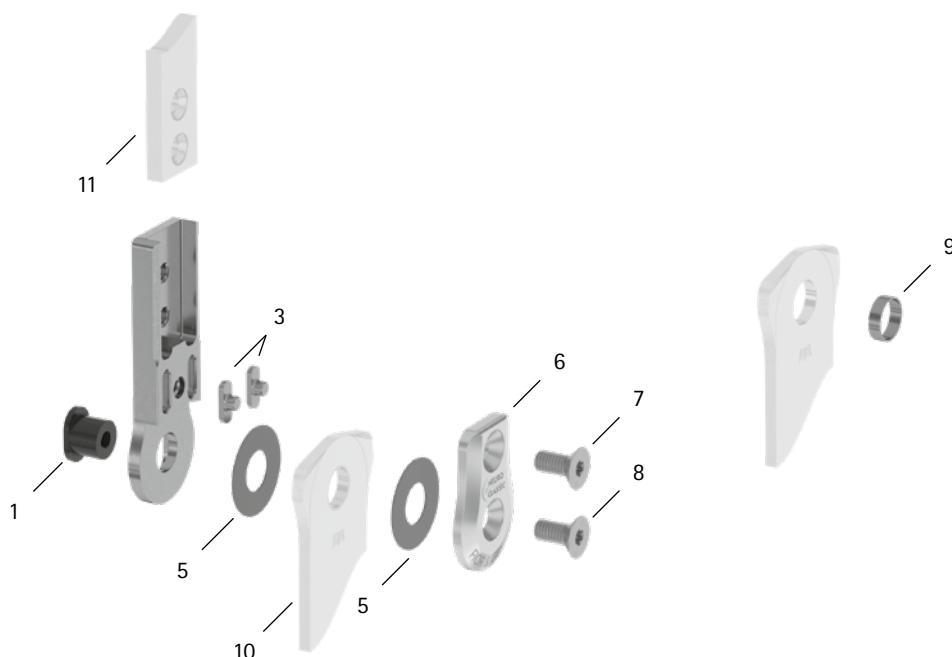


patient commission/configuration ID \_\_\_\_\_



Item	12mm	Description	Potential Problem	Measure	Recommended Inspection, Potential Replacement*	Latest Replacement after
<b>System Joint</b>						
1	SB7049-L0540	bearing nut, short**	wear	replacing	every 6 months	36 months
3	SF0391-01	feather key with pin	breakage	replacing	every 6 months	36 months
5	GS1407-040	sliding washer, Ø = 14mm	wear	replacing	every 6 months	18 months
5	GS1407-045					
5	GS1407-050					
5	GS1407-055					
5	GS1407-060					
6	SF0161-AL	cover plate**	wear	replacing	every 6 months	36 months
7	SC1404-L08	countersunk flat head screw with hexalobular socket**	wear	replacing	every 6 months	36 months
8	SC1404-L08	countersunk flat head screw with hexalobular socket (axle screw)**				
1, 6-8	SF1971-AL	functional unit plug + go modularity***	loss of function, wear	replacing	every 6 months	36 months
<b>System Stirrups, System Anchors and System Side Bars</b>						
9	BR0807-L020	sliding bushing	wear	replacing	every 6 months	18 months
10	see catalogue	system stirrup	wear or breakage	replacing	every 6 months	48 months
11	see catalogue	system anchor and system side bar	wear or breakage	replacing	every 6 months	if required

\* depending on the assessment of the distributor of the custom-made product regarding the patient's usage behaviour

\*\* is part of the functional unit

\*\*\* included system components can be exchanged separately