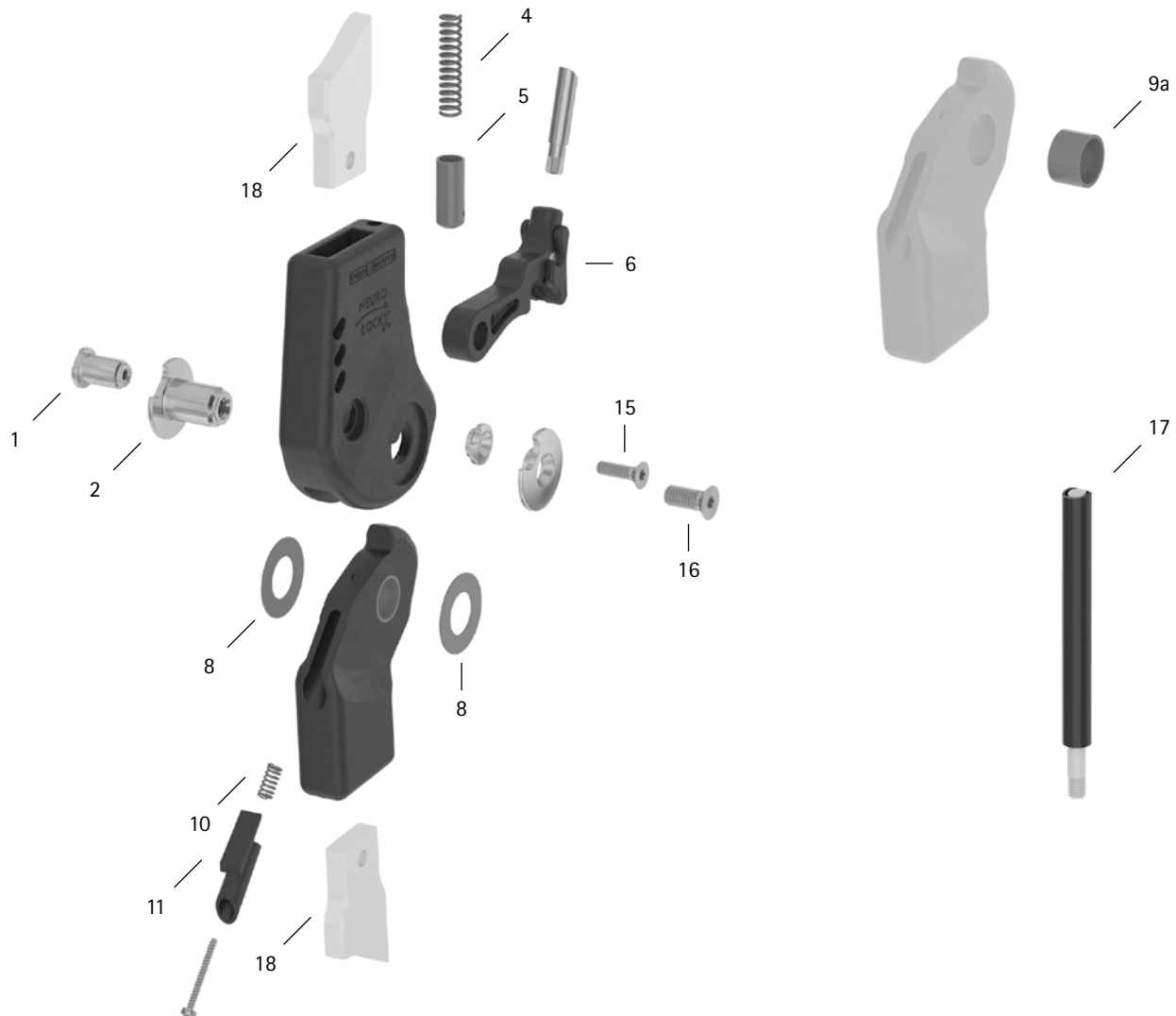


patient commission/configuration ID _____



Item	16mm	Description	Potential Problem	Measure	Recommended Inspection, Potential Replacement*	Latest Replacement after
System Joint						
1	SK0893-3/C	bearing nut (locking pawl)	wear	replacing	every 6 months	36 months
2	SK0893-1/C	bearing nut (joint axis)				
4	FE1526-01	coil spring	wear	replacing	every 6 months	18 months
5	SK0872-10/C	spring guide	wear	replacing	every 6 months	if required
6	SK0873-5/C	locking pawl with fixing pawl, carbon-titanium hybrid	wear	replacing	every 6 months	36 months
8	GS2311-040	sliding washer, $\varnothing = 23\text{mm}$	wear	replacing	every 6 months	18 months
8	GS2311-045					
8	GS2311-050					
8	GS2311-055					
8	GS2311-060					
9a	BP1211-L077	sliding bushing	wear	replacing	every 6 months	18 months

WP0124-GB-2023-01

patient commission/configuration ID _____

Item	16mm	Description	Potential Problem	Measure	Recommended Inspection, Potential Replacement*	Latest Replacement after
10	FE1510-02	pressure spring	wear	replacing	every 6 months	18 months
11	SK9803-E005/C	5° extension stop	wear	replacing	every 6 months	if required
15	SC1404-L12	countersunk flat head screw with hexalobular socket	wear	replacing	every 6 months	36 months
16	SC1405-L14	countersunk flat head screw, hexalobular socket (axle screw)				
Pulling Cable (If Existing). You need one pulling cable adaptor for each locking pawl to mount a pulling cable on.						
17	ZS1000-L400	pulling cable, nylon cable with cover, 400mm	wear	replacing	every 6 months	36 months
17	ZS1000-L500	pulling cable, nylon cable with cover, 500mm				
17	ZS1000-L600	pulling cable, nylon cable with cover, 600mm				
17	ZS1000-L700	pulling cable, nylon cable with cover, 700mm				
17	ZS1100-L400	pulling cable, separable through coupler, 400mm				
17	ZS1100-L500	pulling cable, separable through coupler, 500mm				
System Anchors and System Side Bars						
18	see catalogue	system anchor and system side bar	wear or breakage	replacing	every 6 months	if required

* depending on the assessment of the distributor of the custom-made product regarding the patient's usage behaviour