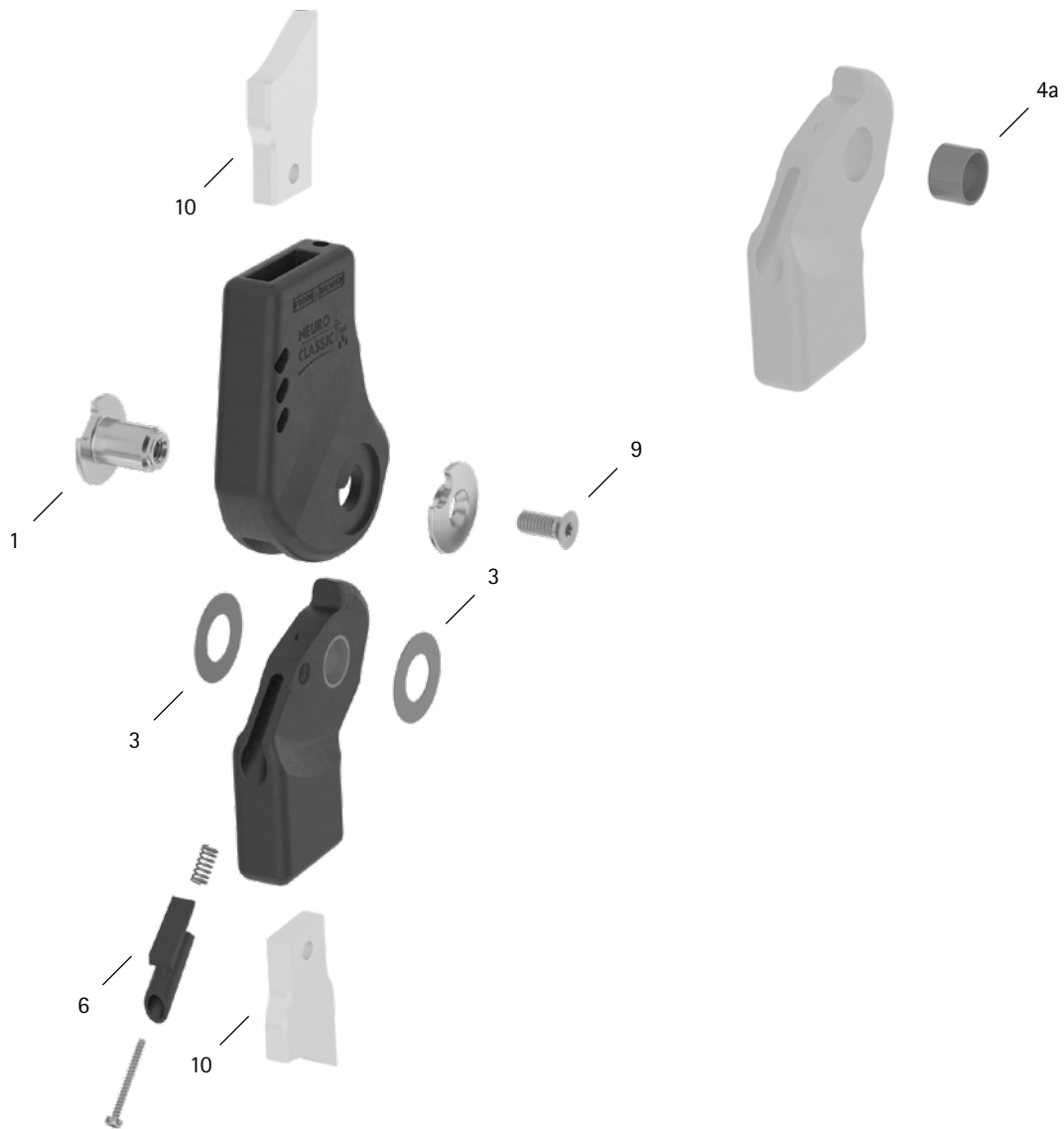


patient commission/configuration ID _____



Item	16mm	Description	Potential Problem	Measure	Recommended Inspection, Potential Replacement*	Latest Replacement after
System Joint						
1	SK0893-1/C	bearing nut	wear	replacing	every 6 months	36 months
3	GS2311-040	sliding washer, $\varnothing = 23\text{mm}$	wear	replacing	every 6 months	18 months
3	GS2311-045					
3	GS2311-050					
3	GS2311-055					
3	GS2311-060					
4a	BP1211-L077	sliding bushing	wear	replacing	every 6 months	18 months
6	SK9803-E005/C	5° extension stop	wear	replacing	every 6 months	if required
9	SC1405-L14	countersunk flat head screw with hexalobular socket	wear	replacing	every 6 months	36 months
System Anchors and System Side Bars						
10	see catalogue	system anchor and system side bar	wear or breakage	replacing	every 6 months	if required

* depending on the assessment of the distributor of the custom-made product regarding the patient's usage behaviour