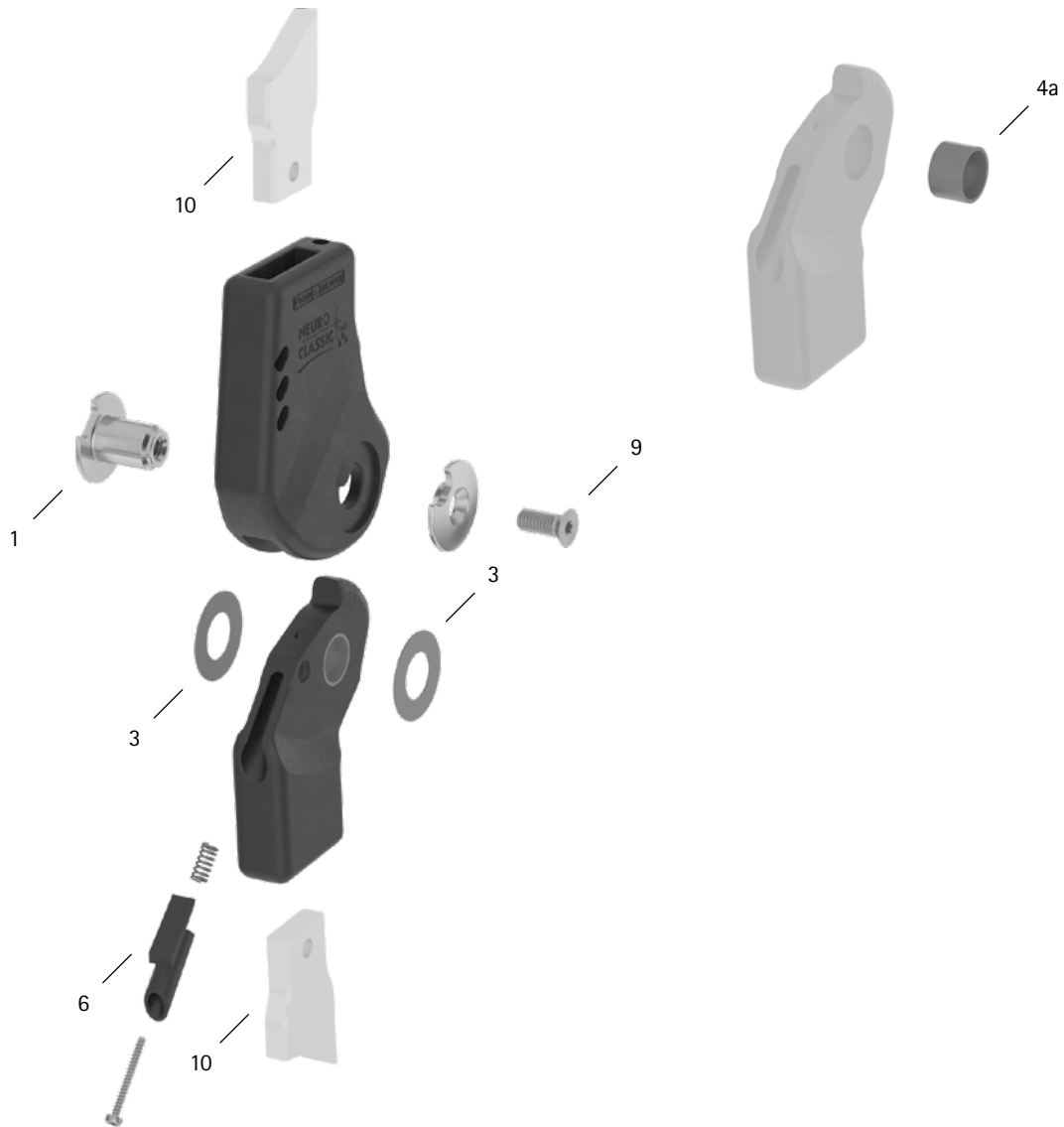


patient commission/configuration ID \_\_\_\_\_



Item	14mm	Description	Potential Problem	Measure	Recommended Inspection, Potential Replacement*	Latest Replacement after
<b>System Joint</b>						
1	SK0892-1/C	bearing nut	wear	replacing	every 6 months	36 months
3	GS2009-040	sliding washer, $\varnothing = 20\text{mm}$	wear	replacing	every 6 months	18 months
3	GS2009-045					
3	GS2009-050					
3	GS2009-055					
3	GS2009-060					
4a	BP1009-L059	sliding bushing	wear	replacing	every 6 months	18 months
6	SK9802-E005/C	5° extension stop	wear	replacing	every 6 months	if required
9	SC1404-L10	countersunk flat head screw with hexalobular socket	wear	replacing	every 6 months	36 months
<b>System Anchors and System Side Bars</b>						
10	see catalogue	system anchor and system side bar	wear or breakage	replacing	every 6 months	if required

\* depending on the assessment of the distributor of the custom-made product regarding the patient's usage behaviour