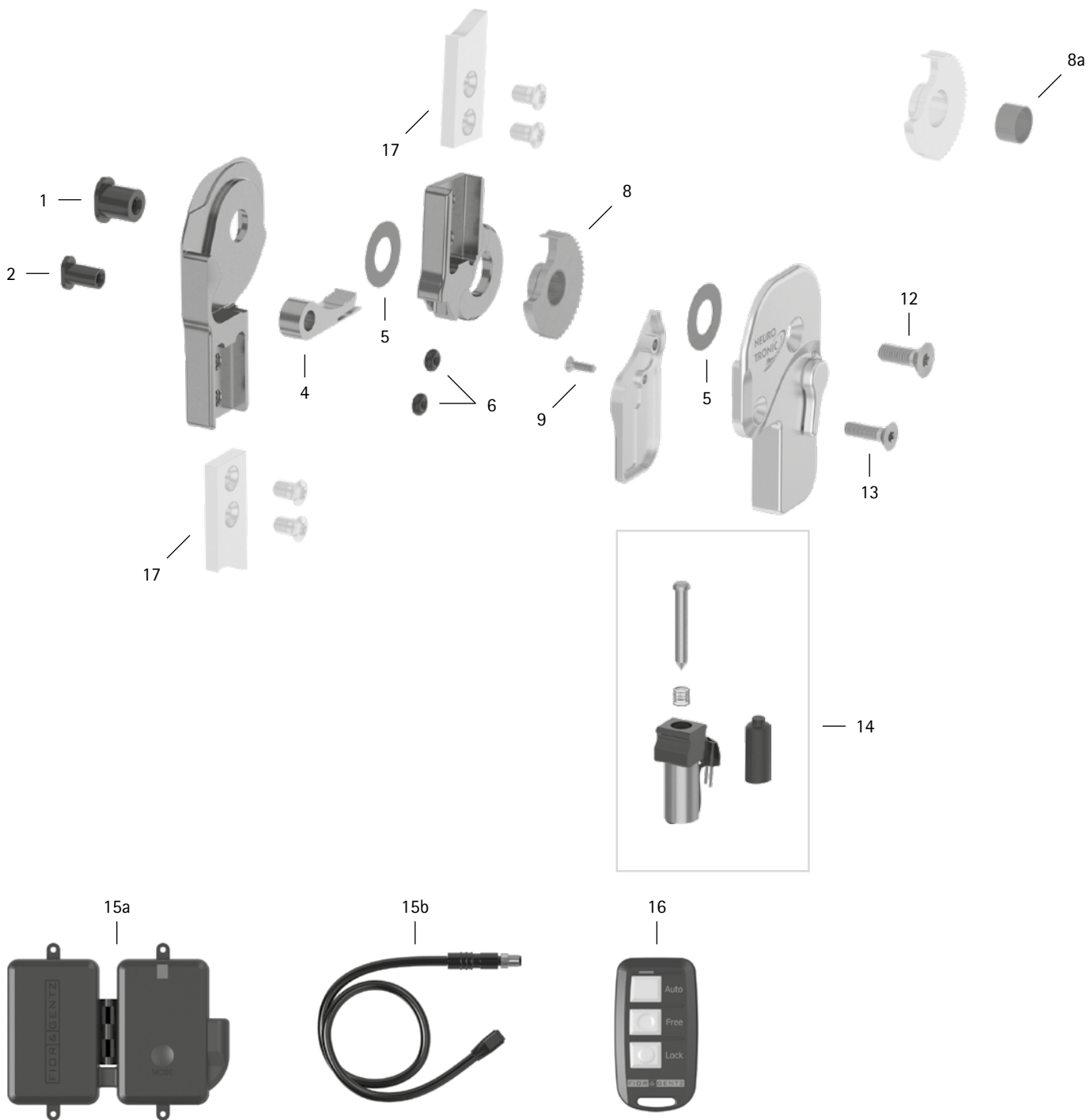


patient commission/configuration ID _____



Item	16mm	Description	Potential Problem	Measure	Recommended Inspection, Potential Replacement*	Latest Replacement after
System Joint						
1	SB9669-L0990	bearing nut (joint axis)	wear	replacing	every 6 months	36 months
2	SB6049-L0990	bearing nut (locking pawl)				
4	SK0373	locking pawl	wear of the teeth	replacing	every 3 months	12 months at activity level 1 and 2 9 months at activity level 3 6 months at activity level 4

patient commission/configuration ID _____

Item	16mm	Description	Potential Problem	Measure	Recommended Inspection, Potential Replacement*	Latest Replacement after
5	GS1910-040	sliding washer, Ø = 19mm	wear	replacing	every 6 months	18 months
5	GS1910-045					
5	GS1910-050					
5	GS1910-055					
5	GS1910-060					
6	VE3771-D/012/26	O-ring damper set	wear	replacing	every 6 months	18 months
8	SK0363-2L	toothed ring with sliding bushing, left lateral or right medial, titanium	wear of the teeth	replacing	every 3 months	12 months at activity level 1 and 2
8	SK0363-2R	toothed ring with sliding bushing, left medial or right lateral, titanium				9 months at activity level 3 6 months at activity level 4
8a	BP1110-L059	sliding bushing	wear	replacing	every 6 months	18 months
9	SC1403-L08/1	countersunk flat head screw with hexalobular socket**	wear	replacing	every 6 months	36 months
12	SC1405-L14	countersunk flat head screw with hexalobular socket (axle screw)**	wear	replacing	every 6 months	36 months
13	SC1404-L14	countersunk flat head screw with hexalobular socket**				
14	SK0385	solenoid unit**	soiling	removing dirt from solenoid and plunger	every 3 months	36 months
9-14	SK3883-L	functional unit, left lateral or right medial***	loss of function, wear	replacing	every 6 months	36 months
9-14	SK3883-R	functional unit, left medial or right lateral***				
15a	ET3860	controller with Bluetooth®**** with lithium-polymer battery	outdated software	updating software	every 6 months	36 months
			low battery health	replacing controller		
15b	ET0712-01	connection cable for solenoid, unilateral, 300mm	damage	replacing	every 6 months	if required
15b	ET0712-02	connection cable for solenoid, bilateral, 420mm				
Remote Control						
16	ET3840-P	remote control with Bluetooth® for the patient	outdated software	updating software	every 6 months	36 months
Software for Mobile Devices						
-	-	software for mobile devices (operating system, Expert App, User App)	security gaps in the software	updating software	every 6 months	if required
System Anchors and System Side Bars						
17	see catalogue	system anchor and system side bar	wear or breakage	replacing	every 6 months	if required

* depending on the assessment of the distributor of the custom-made product regarding the patient's usage behaviour

** is part of the functional unit

*** included system components can be exchanged separately

**** The Bluetooth® word mark and logos are registered trademarks of Bluetooth SIG, Inc. and any use of such marks by FIOR & GENTZ is under license.