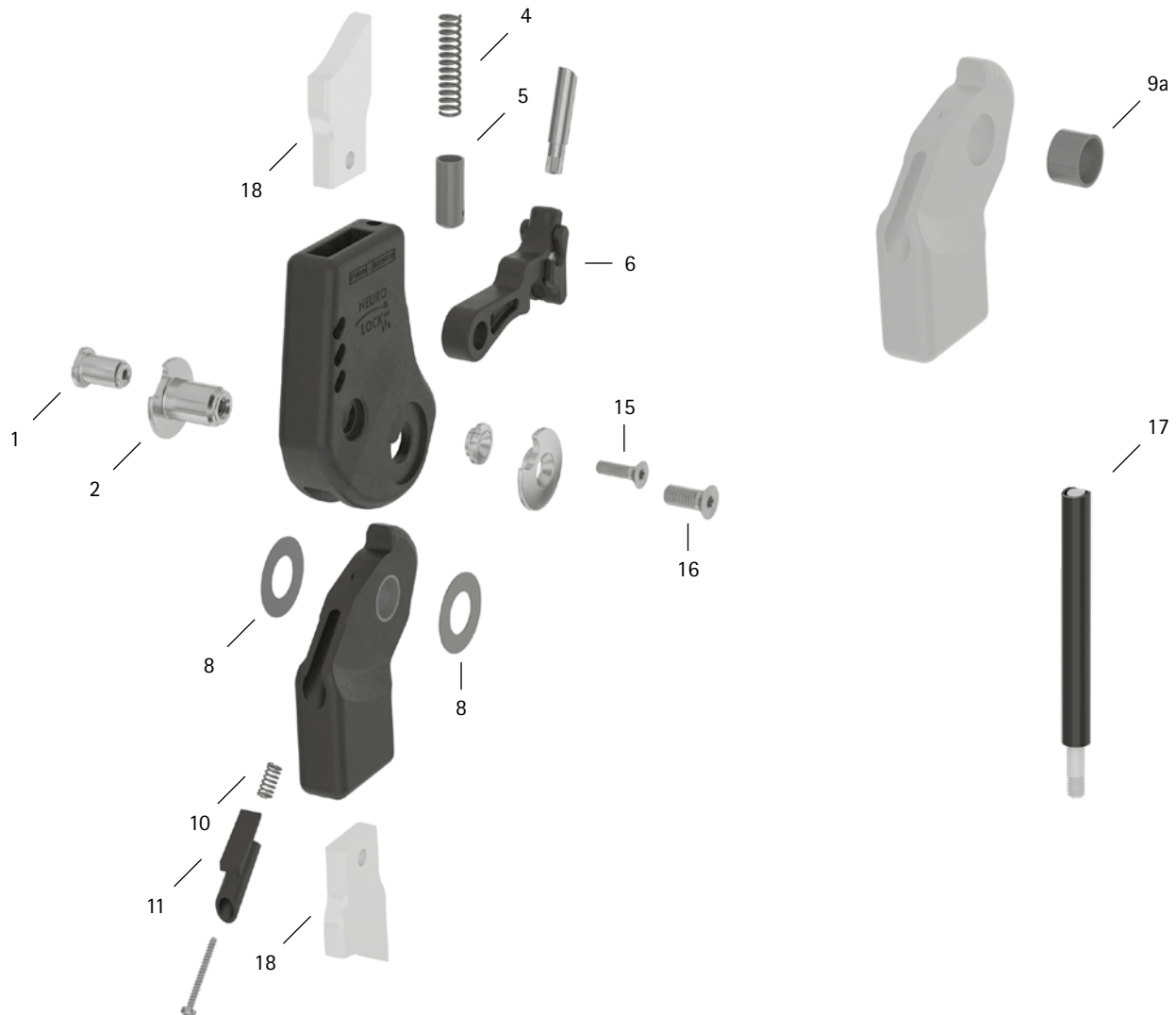


patient commission/configuration ID \_\_\_\_\_



Item	20mm	Description	Potential Problem	Measure	Recommended Inspection, Potential Replacement*	Latest Replacement after
<b>System Joint</b>						
1	SK0895-3/C	bearing nut (locking pawl)	wear	replacing	every 6 months	36 months
2	SK0895-1/C	bearing nut (joint axis)				
4	FE1733-02	coil spring	wear	replacing	every 6 months	18 months
5	SK0875-10/C	spring guide	wear	replacing	every 6 months	if required
6	SK0875-5/C	locking pawl with fixing pawl, carbon-titanium hybrid	wear	replacing	every 6 months	36 months
8	GS2413-040	sliding washer, $\varnothing = 24\text{mm}$	wear	replacing	every 6 months	18 months
8	GS2413-045					
8	GS2413-050					
8	GS2413-055					
8	GS2413-060					
9a	BP1412-L090	sliding bushing	wear	replacing	every 6 months	18 months

WFO109-GB-2023-01

patient commission/configuration ID \_\_\_\_\_

Item	20mm	Description	Potential Problem	Measure	Recommended Inspection, Potential Replacement*	Latest Replacement after
10	FE1510-02	pressure spring	wear	replacing	every 6 months	18 months
11	SK9805-E005/C	5° extension stop	wear	replacing	every 6 months	if required
15	SC1404-L14	countersunk flat head screw with hexalobular socket	wear	replacing	every 6 months	36 months
16	SC1406-L14	countersunk flat head screw, hexalobular socket (axle screw)				
<b>Pulling Cable (If Existing). You need one pulling cable adaptor for each locking pawl to mount a pulling cable on.</b>						
17	ZS1000-L400	pulling cable, nylon cable with cover, 400mm	wear	replacing	every 6 months	36 months
17	ZS1000-L500	pulling cable, nylon cable with cover, 500mm				
17	ZS1000-L600	pulling cable, nylon cable with cover, 600mm				
17	ZS1000-L700	pulling cable, nylon cable with cover, 700mm				
17	ZS1100-L400	pulling cable, separable through coupler, 400mm				
17	ZS1100-L500	pulling cable, separable through coupler, 500mm				
<b>System Anchors and System Side Bars</b>						
18	see catalogue	system anchor and system side bar	wear or breakage	replacing	every 6 months	if required

\* depending on the assessment of the distributor of the custom-made product regarding the patient's usage behaviour