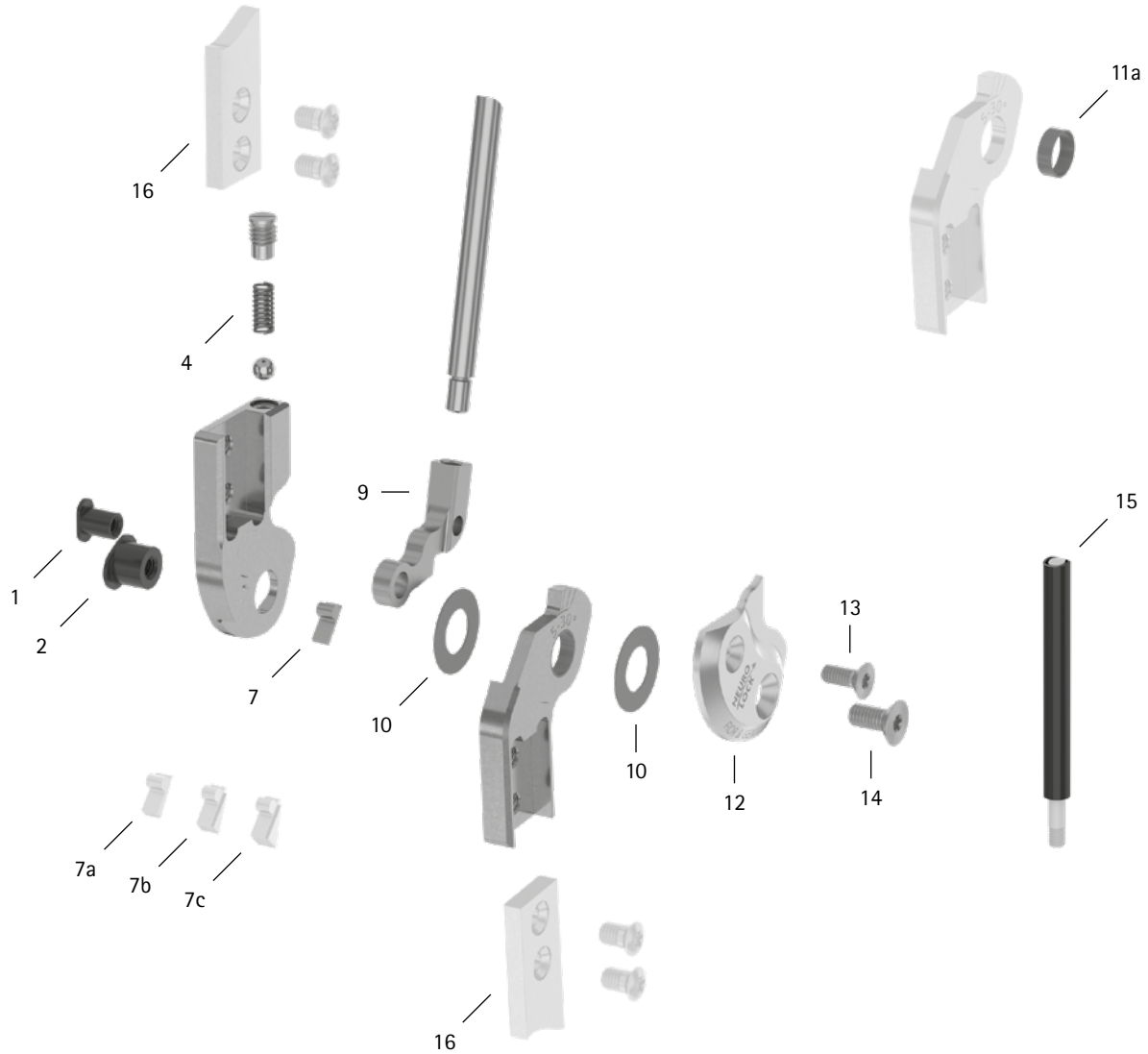


patient commission/configuration ID \_\_\_\_\_



Item	16mm	Description	Potential Problem	Measure	Recommended Inspection, Potential Replacement*	Latest Replacement after
<b>System Joint</b>						
1	SB6044-L0750	bearing nut (locking pawl)	wear	replacing	every 6 months	36 months
2	SB9664-L0750	bearing nut (joint axis)				
4	FE1414-02	pressure spring	wear	replacing	every 6 months	18 months
7	SK9603-E005	5° extension stop	wear	replacing	every 6 months	if required
7a	SK9603-E010	10° extension stop				
7b	SK9603-E020	20° extension stop				
7c	SK9603-E030	30° extension stop				

WFP0101-GB-2023-01

patient commission/configuration ID \_\_\_\_\_

Item	16mm	Description	Potential Problem	Measure	Recommended Inspection, Potential Replacement*	Latest Replacement after
9	SK0473-TI038	locking pawl	wear	replacing	every 6 months	36 months
9	SK0473-TI050					
9	SK0473-TI063					
9	SK0473-TI075					
9	SK0473-TI088					
9	SK0473-TI100					
10	GS1910-040	sliding washer, Ø = 19mm	wear	replacing	every 6 months	18 months
10	GS1910-045					
10	GS1910-050					
10	GS1910-055					
10	GS1910-060					
11a	BP1110-L035	sliding bushing	wear	replacing	every 6 months	18 months
12	SK0453-2L/AL	cover plate, left lateral or right medial, aluminium	wear	replacing	every 6 months	36 months
12	SK0453-2R/AL	cover plate, left medial or right lateral, aluminium				
13	SC1404-L10	countersunk flat head screw with hexalobular socket	wear	replacing	every 6 months	36 months
14	SC1405-L11	countersunk flat head screw with hexalobular socket (axle screw)				
<b>Pulling Cable (If Existing). You need one pulling cable adaptor for each locking pawl to mount a pulling cable on.</b>						
15	ZS1000-L400	pulling cable, nylon cable with cover, 400mm	wear	replacing	every 6 months	36 months
15	ZS1000-L500	pulling cable, nylon cable with cover, 500mm				
15	ZS1000-L600	pulling cable, nylon cable with cover, 600mm				
15	ZS1000-L700	pulling cable, nylon cable with cover, 700mm				
15	ZS1100-L400	pulling cable, separable through coupler, 400mm				
15	ZS1100-L500	pulling cable, separable through coupler, 500mm				
<b>System Anchors and System Side Bars</b>						
16	see catalogue	system anchor and system side bar	wear or breakage	replacing	every 6 months	if required

\* depending on the assessment of the distributor of the custom-made product regarding the patient's usage behaviour