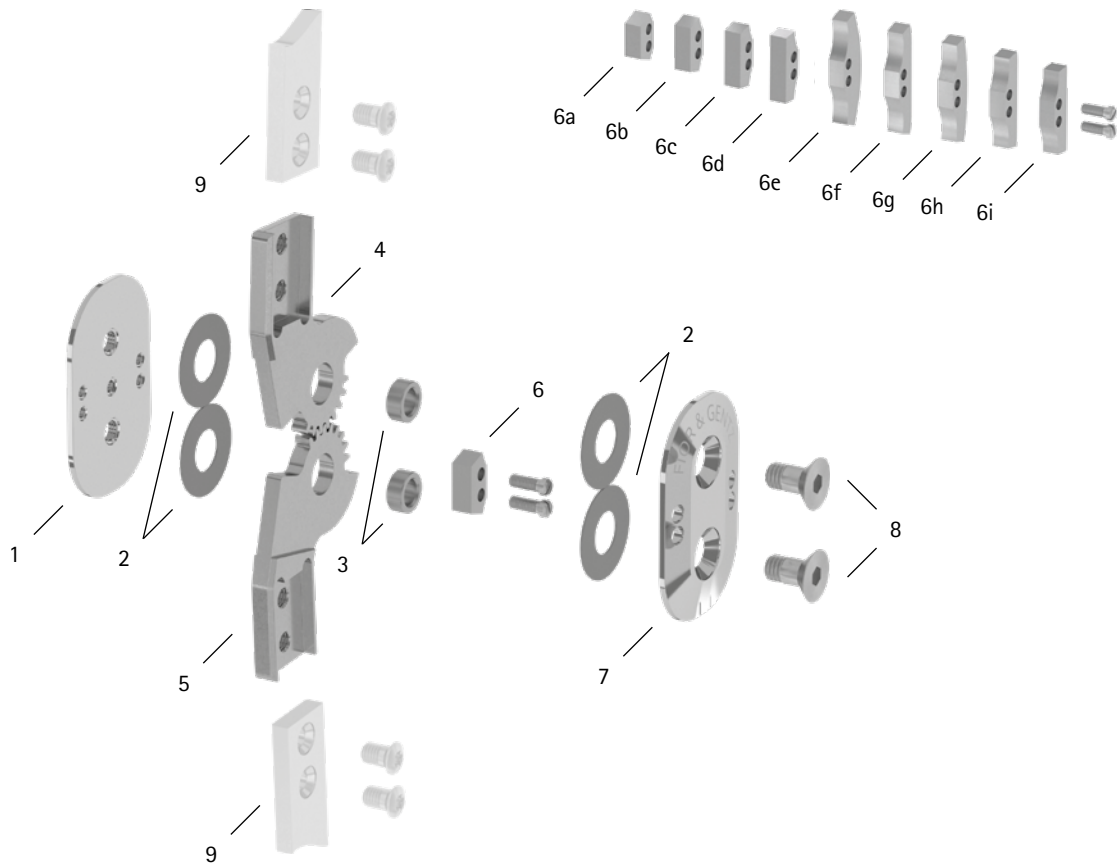


patient commission/configuration ID _____



Item	16mm	Description	Potential Problem	Measure	Recommended Inspection, Potential Replacement*	Latest Replacement after
System Joint						
1	SK0250-ST	base plate	wear	replacing	every 6 months	36 months
2	GS2210-050	sliding washer	wear	replacing	every 6 months	18 months
3	BB9664-92	bronze bushing, Ø = 9.6mm, h= 4.92mm	wear	replacing	every 6 months	36 months
3	BB9664-95	bronze bushing, Ø = 9.6mm, h= 4.95mm				
3	BB9664-98	bronze bushing, Ø = 9.6mm, h= 4.98mm				
4	SK0203-L/ST	upper part, left lateral or right medial, straight, steel	wear	replacing	every 6 months	36 months
4	SK0203-R/ST	upper part, left medial or right lateral, straight, steel				
4	SK0223-L/ST	upper part, left lateral or right medial, bent inwards, steel				
4	SK0223-R/ST	upper part, left medial or right lateral, bent inwards, steel				
5	SK0213-L/ST	lower part, left lateral or right medial, straight, steel				
5	SK0213-R/ST	lower part, left medial or right lateral, straight, steel				
5	SK0233-L/ST	lower part, left lateral or right medial, bent inwards, steel				
5	SK0233-R/ST	lower part, left medial or right lateral, bent inwards, steel				

WP0093-GB-2023-01

patient commission/configuration ID _____

Item	16mm	Description	Potential Problem	Measure	Recommended Inspection, Potential Replacement*	Latest Replacement after
System Joint						
6a	BK9051-E000	0° extension stop/80° flexion stop with 2 slotted pan head screws	wear	replacing	every 6 months	if required
6	BK9051-E005	5° extension stop with 2 slotted pan head screws				
6b	BK9051-E010	10° extension stop/70° flexion stop with 2 slotted pan head screws				
6c	BK9051-E020	20° extension stop/60° flexion stop with 2 slotted pan head screws				
6d	BK9051-E030	30° extension stop/50° flexion stop with 2 slotted pan head screws				
6e	BK9051-F000	0° flexion stop with 2 slotted pan head screws	wear	replacing	every 6 months	not necessary
6f	BK9051-F005	5° flexion stop with 2 slotted pan head screws				
6g	BK9051-F010	10° flexion stop with 2 slotted pan head screws				
6h	BK9051-F020	20° flexion stop with 2 slotted pan head screws				
6i	BK9051-F030	30° flexion stop with 2 slotted pan head screws				
7	SK0251-ST	cover plate	wear	replacing	every 6 months	36 months
8	SC1016-L12	countersunk flat head screw with hexagon socket and shank	wear	replacing	every 6 months	36 months
System Anchors and System Side Bars						
9	see catalogue	system anchor and system side bar	wear or breakage	replacing	every 6 months	if required

* depending on the assessment of the distributor of the custom-made product regarding the patient's usage behaviour