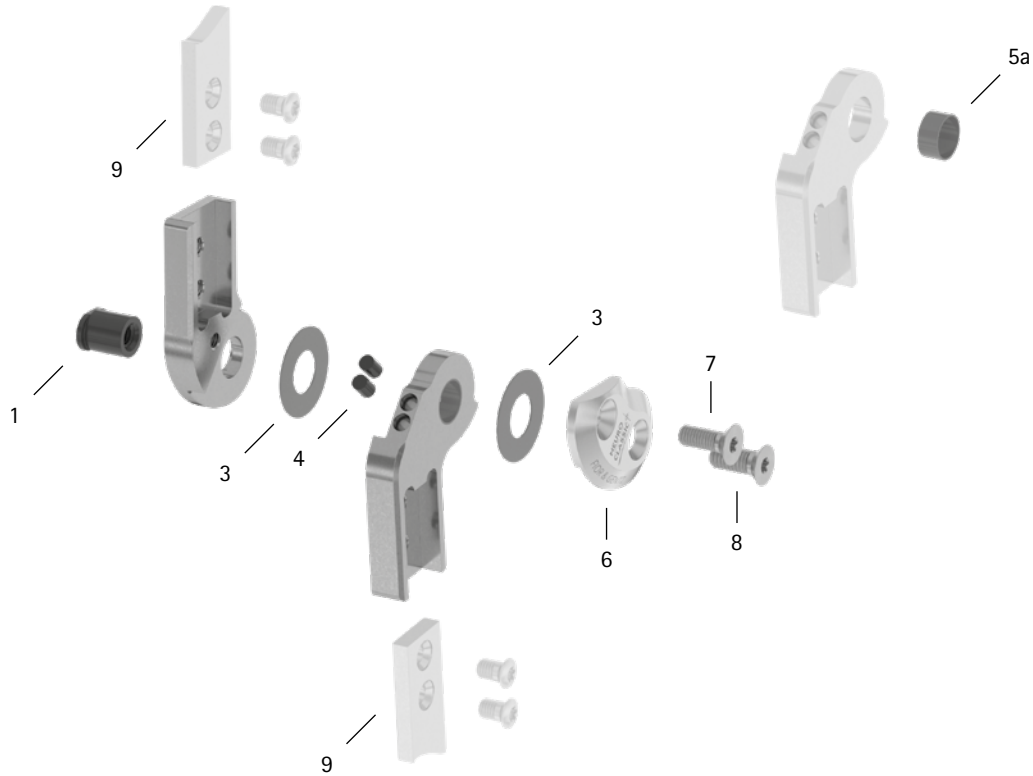


patient commission/configuration ID _____



Item	20mm	Description	Potential Problem	Measure	Recommended Inspection, Potential Replacement*	Latest Replacement after
System Joint						
1	SB1069-L1220	bearing nut	wear	replacing	every 6 months	36 months
3	GS2611-040	sliding washer, Ø = 26mm	wear	replacing	every 6 months	18 months
3	GS2611-045					
3	GS2611-050					
3	GS2611-055					
3	GS2611-060					
4	PN1000-L05/5	extension stop damper	wear	replacing	every 6 months	18 months
5a	BP1211-L060	sliding bushing	wear	replacing	every 6 months	18 months
6	SL0155-L/AL	cover plate, left lateral or right medial, aluminium	wear	replacing	every 6 months	36 months
6	SL0155-R/AL	cover plate, left medial or right lateral, aluminium	wear	replacing	every 6 months	36 months
7	SC1405-L14	countersunk flat head screw with hexalobular socket	wear	replacing	every 6 months	36 months
8	SC1406-L14	countersunk flat head screw with hexalobular socket (axle screw)				
System Anchors and System Side Bars						
9	see catalogue	system anchor and system side bar	wear or breakage	replacing	every 6 months	if required

* depending on the assessment of the distributor of the custom-made product regarding the patient's usage behaviour

WP0086-GB-2024-04