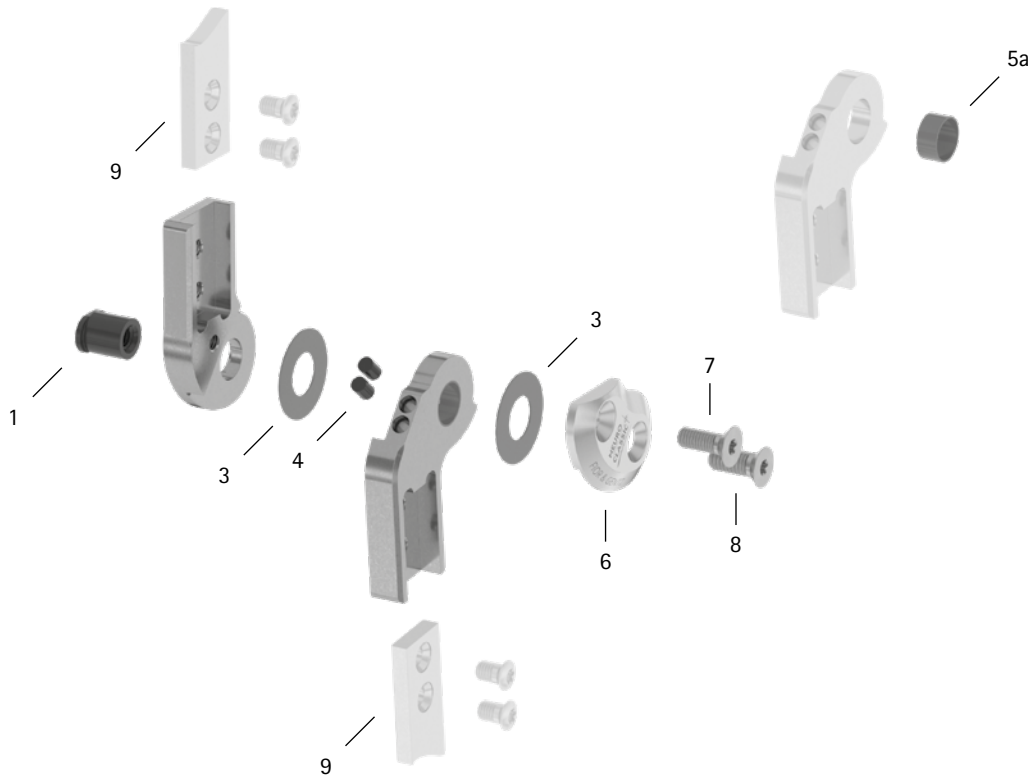


patient commission/configuration ID _____



| Item | 16mm | Description | Potential Problem | Measure | Recommended Inspection, Potential Replacement* | Latest Replacement after |
|--|---------------|--|-------------------|-----------|--|--------------------------|
| System Joint | | | | | | |
| 1 | SB1069-L1060 | bearing nut | wear | replacing | every 6 months | 36 months |
| 3 | GS2311-040 | sliding washer, $\varnothing = 23\text{mm}$ | wear | replacing | every 6 months | 18 months |
| 3 | GS2311-045 | | | | | |
| 3 | GS2311-050 | | | | | |
| 3 | GS2311-055 | | | | | |
| 3 | GS2311-060 | | | | | |
| 4 | PN1000-L05/5 | extension stop damper | wear | replacing | every 6 months | 18 months |
| 5a | BP1211-L055 | sliding bushing | wear | replacing | every 6 months | 18 months |
| 6 | SL0153-L/AL | cover plate, left lateral or right medial, aluminium | wear | replacing | every 6 months | 36 months |
| 6 | SL0153-R/AL | cover plate, left medial or right lateral, aluminium | wear | replacing | every 6 months | 36 months |
| 7 | SC1405-L14 | countersunk flat head screw with hexalobular socket | wear | replacing | every 6 months | 36 months |
| 8 | SC1406-L14 | countersunk flat head screw with hexalobular socket (axle screw) | | | | |
| System Anchors and System Side Bars | | | | | | |
| 9 | see catalogue | system anchor and system side bar | wear or breakage | replacing | every 6 months | if required |

* depending on the assessment of the distributor of the custom-made product regarding the patient's usage behaviour

WP0081-GB-2024-04