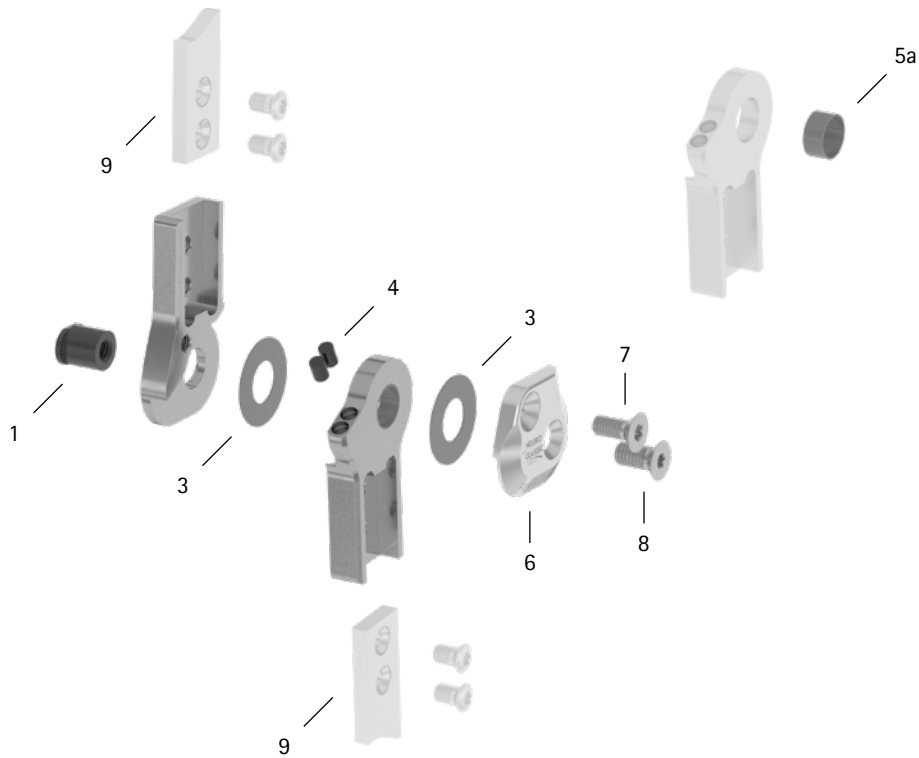
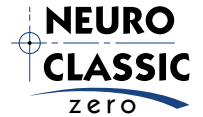


patient commission/configuration ID \_\_\_\_\_



Item	12mm	Description	Potential Problem	Measure	Recommended Inspection, Potential Replacement*	Latest Replacement after
<b>System Joint</b>						
1	SB8559-L0840	bearing nut	wear	replacing	every 6 months	36 months
3	GS1609-040	sliding washer, Ø = 16mm	wear	replacing	every 6 months	18 months
3	GS1609-045					
3	GS1609-050					
3	GS1609-055					
3	GS1609-060					
4	PN1000-L05/5	extension stop damper	wear	replacing	every 6 months	18 months
5a	BP1009-L050	sliding bushing	wear	replacing	every 6 months	18 months
6	SJ0151-L/AL	cover plate, left lateral or right medial, aluminium	wear	replacing	every 6 months	36 months
6	SJ0151-R/AL	cover plate, left medial or right lateral, aluminium	wear	replacing	every 6 months	36 months
7	SC1404-L12	countersunk flat head screw with hexalobular socket	wear	replacing	every 6 months	36 months
8	SC1405-L12	countersunk flat head screw with hexalobular socket (axle screw)	wear	replacing	every 6 months	36 months
<b>System Anchors and System Side Bars</b>						
9	see catalogue	system anchor and system side bar	wear or breakage	replacing	every 6 months	if required

\* depending on the assessment of the distributor of the custom-made product regarding the patient's usage behaviour

WP0070-GB-2024-04