

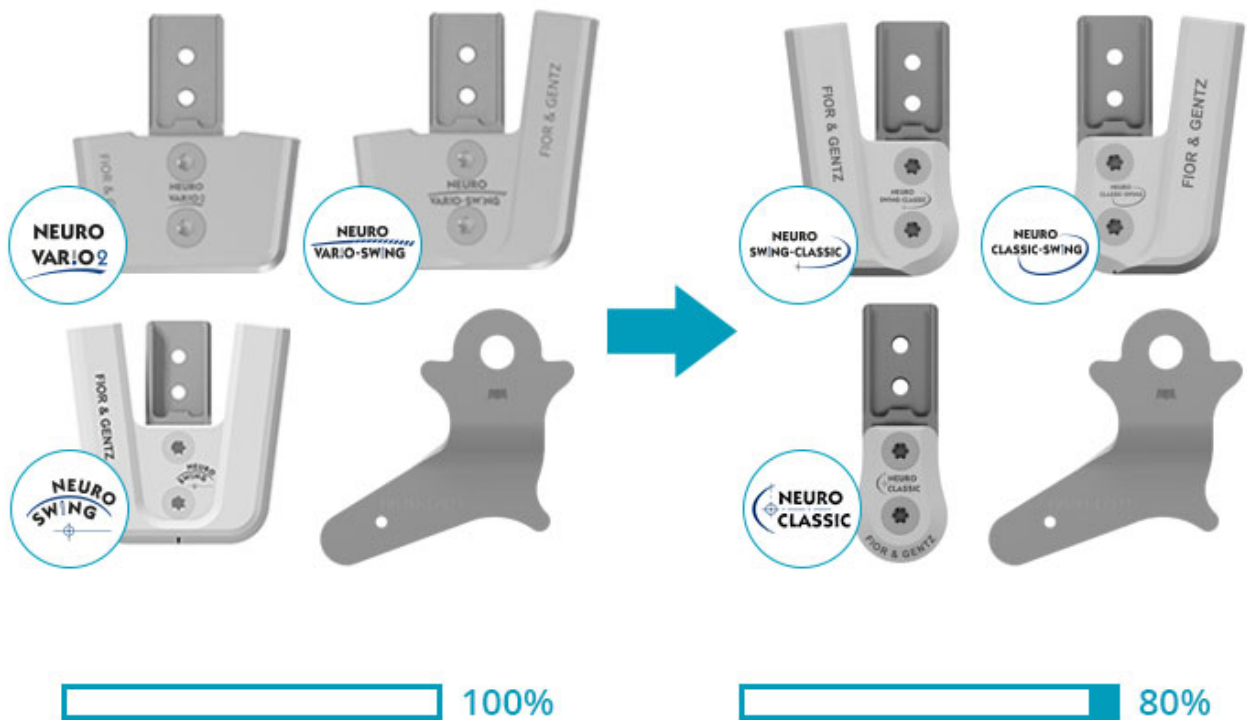
## Modularity of System Ankle Joints

Some of our system ankle joints feature a modular construction, which makes it possible to convert them among themselves quickly and easily by exchanging few system components and, in some cases, filing the system stirrup. In this online tutorial, you can find an overview of the system ankle joints and the steps necessary for conversion.

Step 1/4

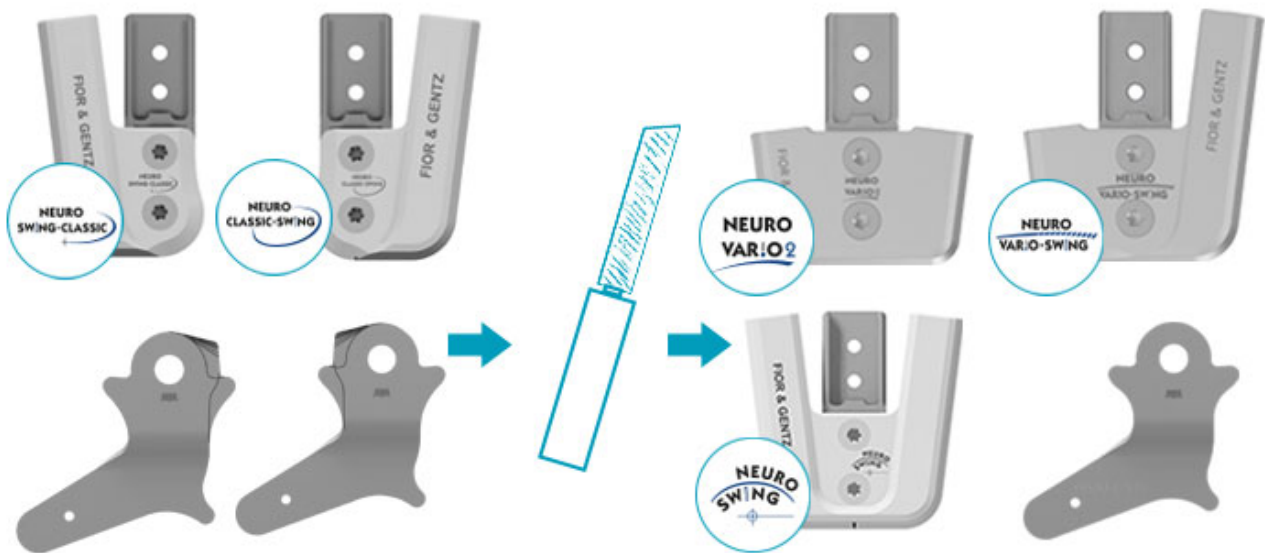


- The system ankle joints NEURO SWING, NEURO VARIO-SWING and NEURO VAR!O 2 are completely modular and can be converted among themselves.
- They differ in the cover plate with the mounted screw units/spring units.
- The cover plate with the mounted screw units/spring units has to be exchanged in order to convert the system joint.
- The production technique for reinforcing the orthosis as well as the assembly/lamination dummy are identical.



- It is also possible to convert the completely modular system ankle joints NEURO SWING, NEURO VARIO-SWING and NEURO VARIO 2 into NEURO SWING-CLASSIC, NEURO CLASSIC-SWING and NEURO CLASSIC.
- They differ in the cover plate with the mounted screw units/spring units and in the system stirrup.
- The cover plate with the mounted screw units/spring units has to be exchanged in order to convert the system joint.
- The production technique for reinforcing the orthosis as well as the assembly/lamination dummy are identical.

*Note: The converted system ankle joints do not have the same stops as directly acquired NEURO SWING-CLASSIC, NEURO CLASSIC-SWING and NEURO CLASSIC system ankle joints, as the system stirrups are different.*



- It is also possible to convert the partially modular system ankle joints NEURO CLASSIC-SWING and NEURO SWING-CLASSIC into the completely modular system ankle joints NEURO SWING, NEURO VARIO-SWING and NEURO VARIO 2 after filing the system stirrup.
- They differ in the cover plate with the mounted screw units/spring units and in the system stirrup.
- The cover plate with the mounted screw units/spring units has to be exchanged and the system stirrup has to be filed in order to convert the system joint.
- The production technique for reinforcing the orthosis as well as the assembly/lamination dummy are identical.