

Maintenance NEURO FLEX MAX, NEURO LOCK, NEURO LOCK MAX

Maintenance NEURO FLEX MAX, NEURO LOCK, NEURO LOCK MAX

Using NEURO FLEX MAX with Step Lock Function as an Example

This online tutorial shows the maintenance of our locked system knee joints:

- NEURO FLEX MAX
- NEURO LOCK
- NEURO LOCK MAX

The system components must be checked for wear and functionality every six months. Here, we give you a detailed overview of the work steps to be taken at every maintenance, using the NEURO FLEX MAX with step lock function as an example.

You will find further information on each system joint in the instructions for use.

Furthermore, you can find the online tutorials for each locked system knee joint under the “Joint Assembly” section.

FIOR & GENTZ

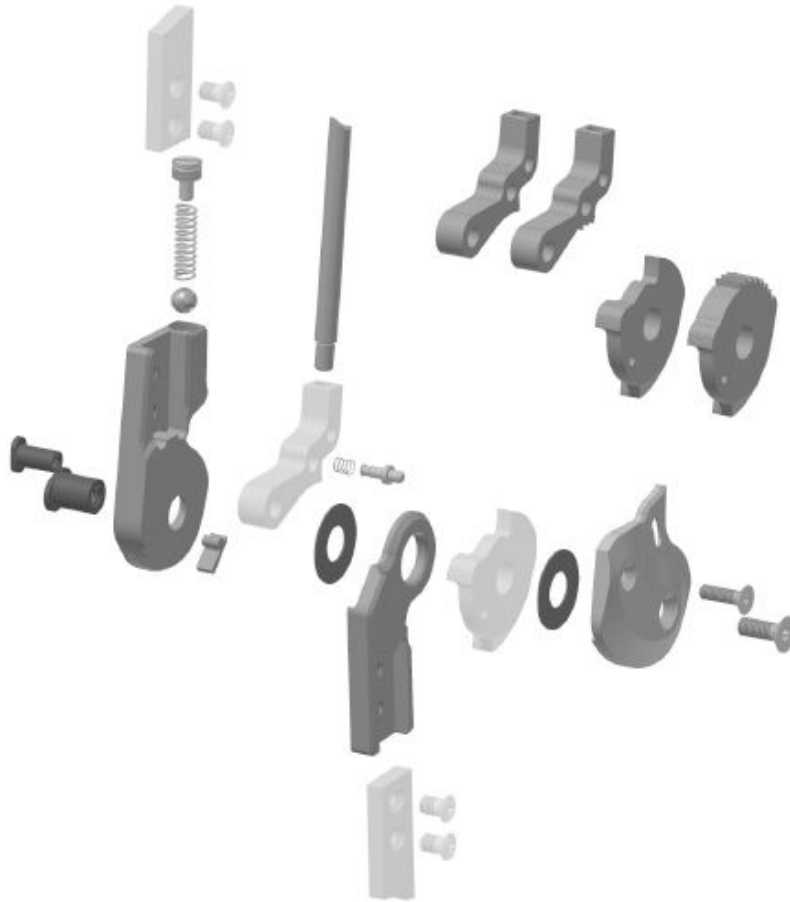
Gesellschaft für Entwicklung und Vertrieb
von orthopädietechnischen Systemen mbH

Dorette-von-Stern-Straße 5
21337 Lüneburg (Germany)

+49 4131 24445-0
+49 4131 24445-57

info@fior-gentz.de
www.fior-gentz.com





You can find information on system components that have to be checked particularly carefully during maintenance in the instructions for use under “Maintenance”.



Check if the lock function works without play. If there is play, new locking parts are necessary.

FIOR & GENTZ

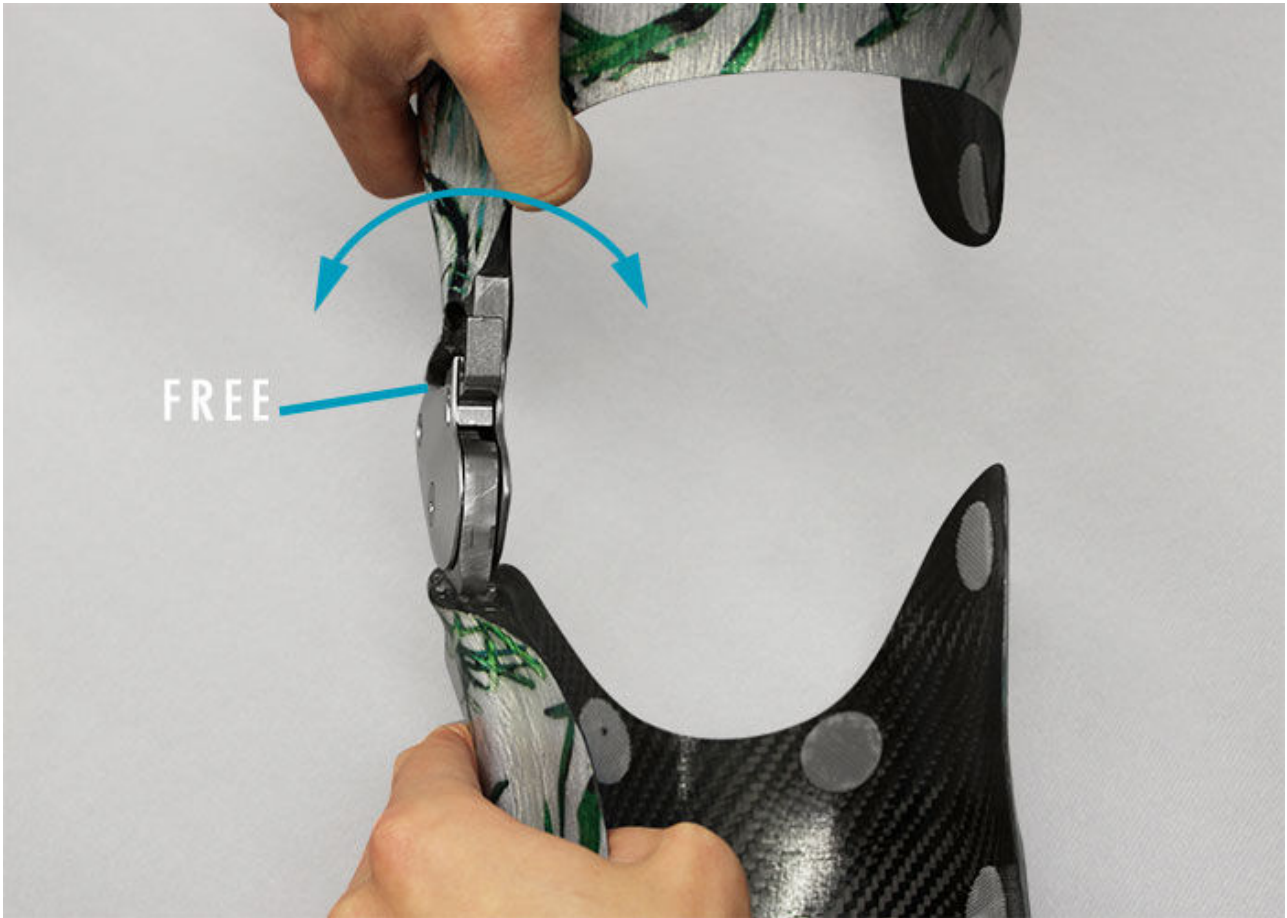
Gesellschaft für Entwicklung und Vertrieb
von orthopädietechnischen Systemen mbH

Dorette-von-Stern-Straße 5
21337 Lüneburg (Germany)

+49 4131 24445-0
+49 4131 24445-57

info@fior-gentz.de
www.fior-gentz.com





Check if the system joint moves without lateral play. If there is play, this can indicate loosened screws and/or worn out sliding washers.

FIOR & GENTZ

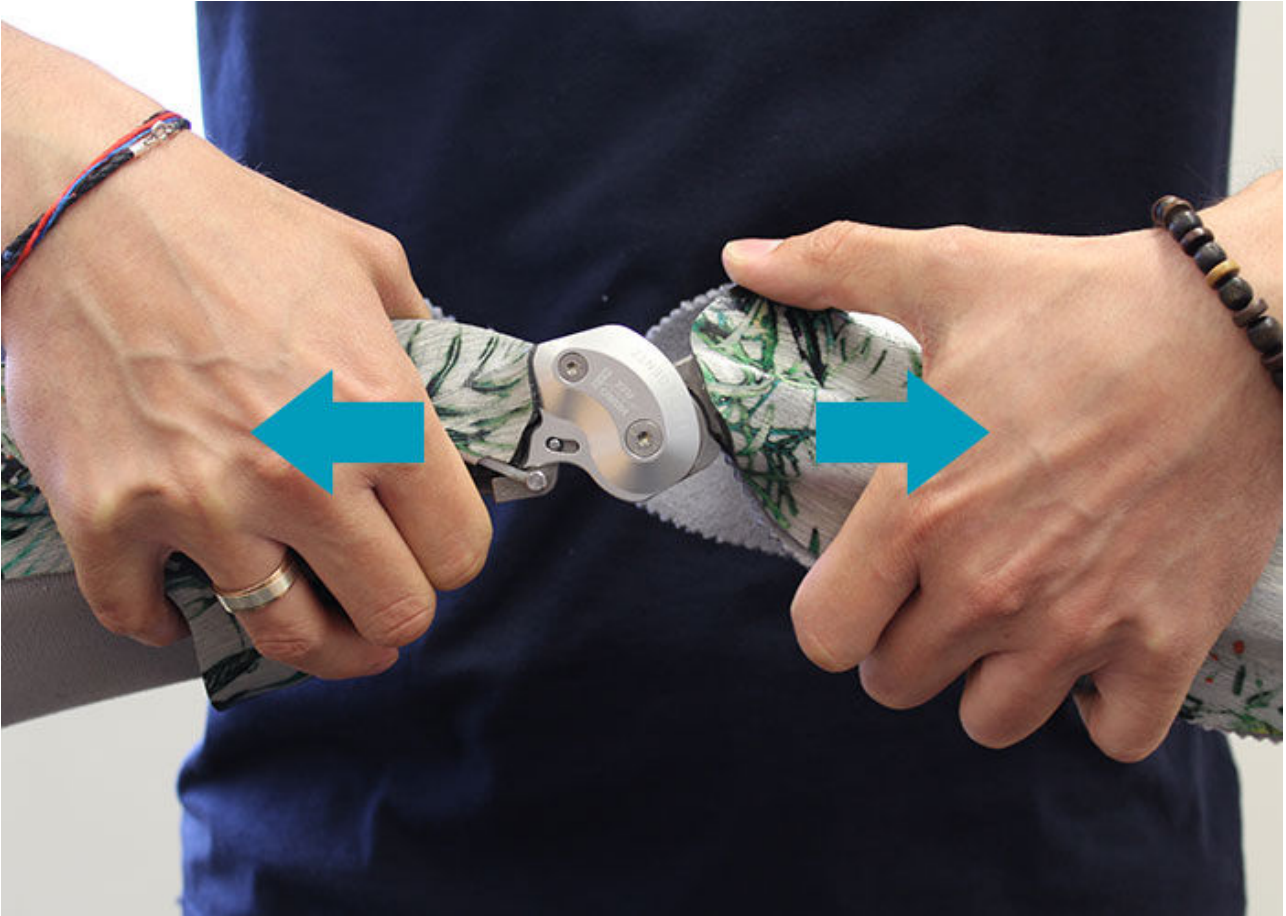
Gesellschaft für Entwicklung und Vertrieb
von orthopädietechnischen Systemen mbH

Dorette-von-Stern-Straße 5
21337 Lüneburg (Germany)

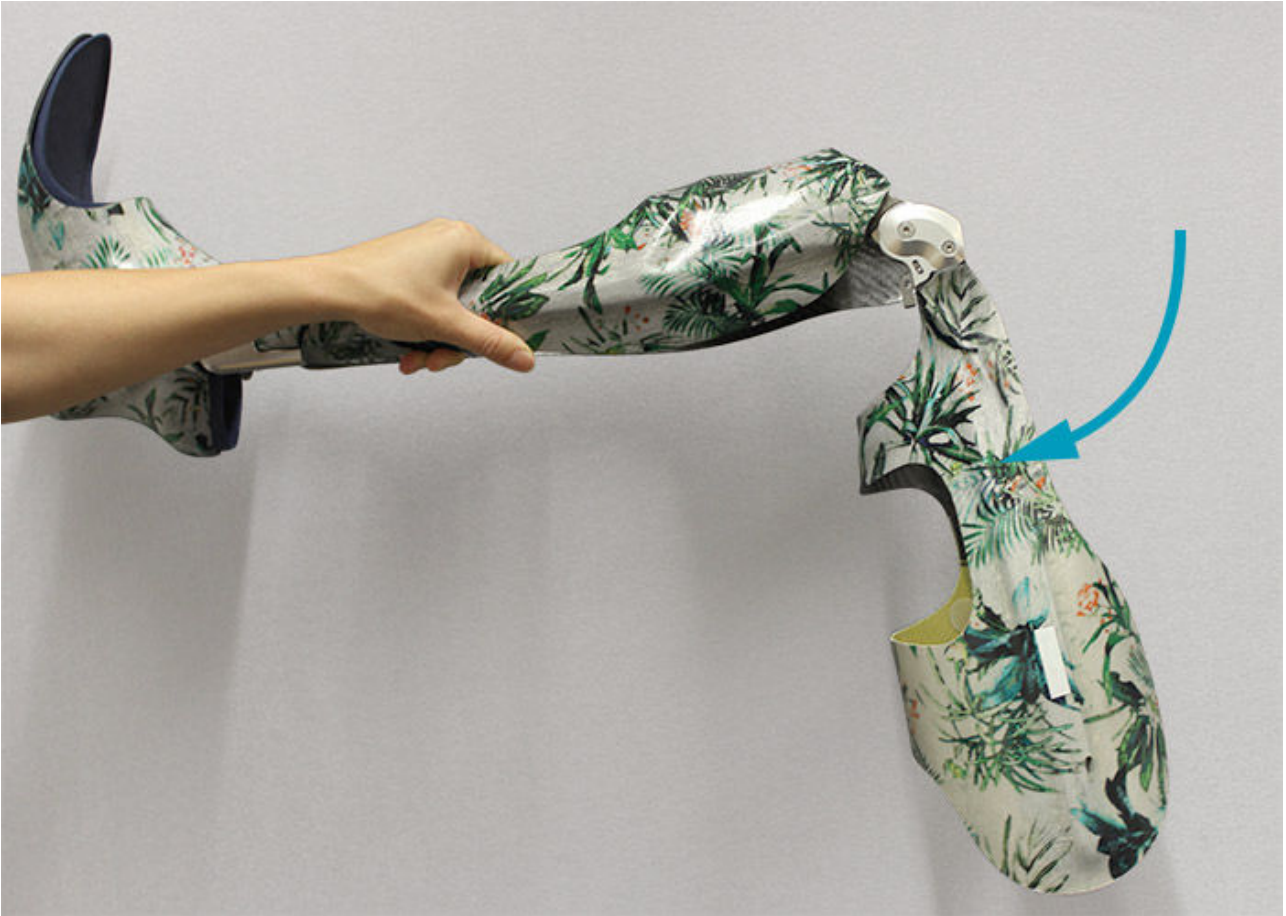
+49 4131 24445-0
+49 4131 24445-57

info@fior-gentz.de
www.fior-gentz.com





Check if there is play around the axis. If there is play, the bearing nut and the repair bushing should be replaced or inserted if necessary.



Check if the system joint moves freely. Bring the system joint in extension. In order to check the flexion, hold the orthosis in a horizontal position and then let go of the femoral shell. The femoral shell should smoothly fall downward up to the maximum possible flexion angle. If the system joint does not move freely, mount the next thinner sliding washers.

Note: At a bilateral orthosis, only check one system joint at a time.



Disassemble the system joint completely.

FIOR & GENTZ

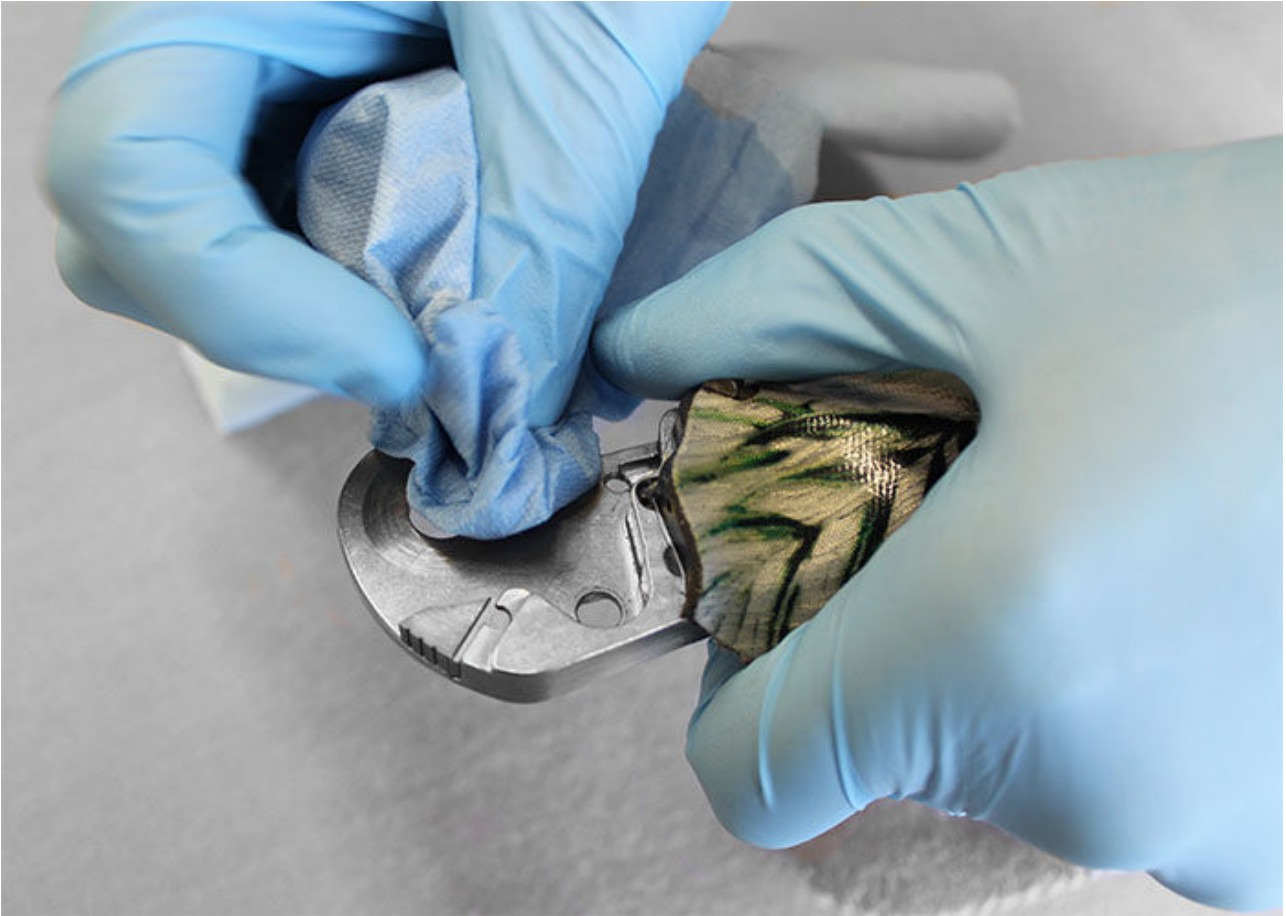
Gesellschaft für Entwicklung und Vertrieb
von orthopädietechnischen Systemen mbH

Dorette-von-Stern-Straße 5
21337 Lüneburg (Germany)

+49 4131 24445-0
+49 4131 24445-57

info@fior-gentz.de
www.fior-gentz.com





Clean all parts and check them carefully.

FIOR & GENTZ

Gesellschaft für Entwicklung und Vertrieb
von orthopädietechnischen Systemen mbH

Dorette-von-Stern-Straße 5
21337 Lüneburg (Germany)

+49 4131 24445-0
+49 4131 24445-57

info@fior-gentz.de
www.fior-gentz.com



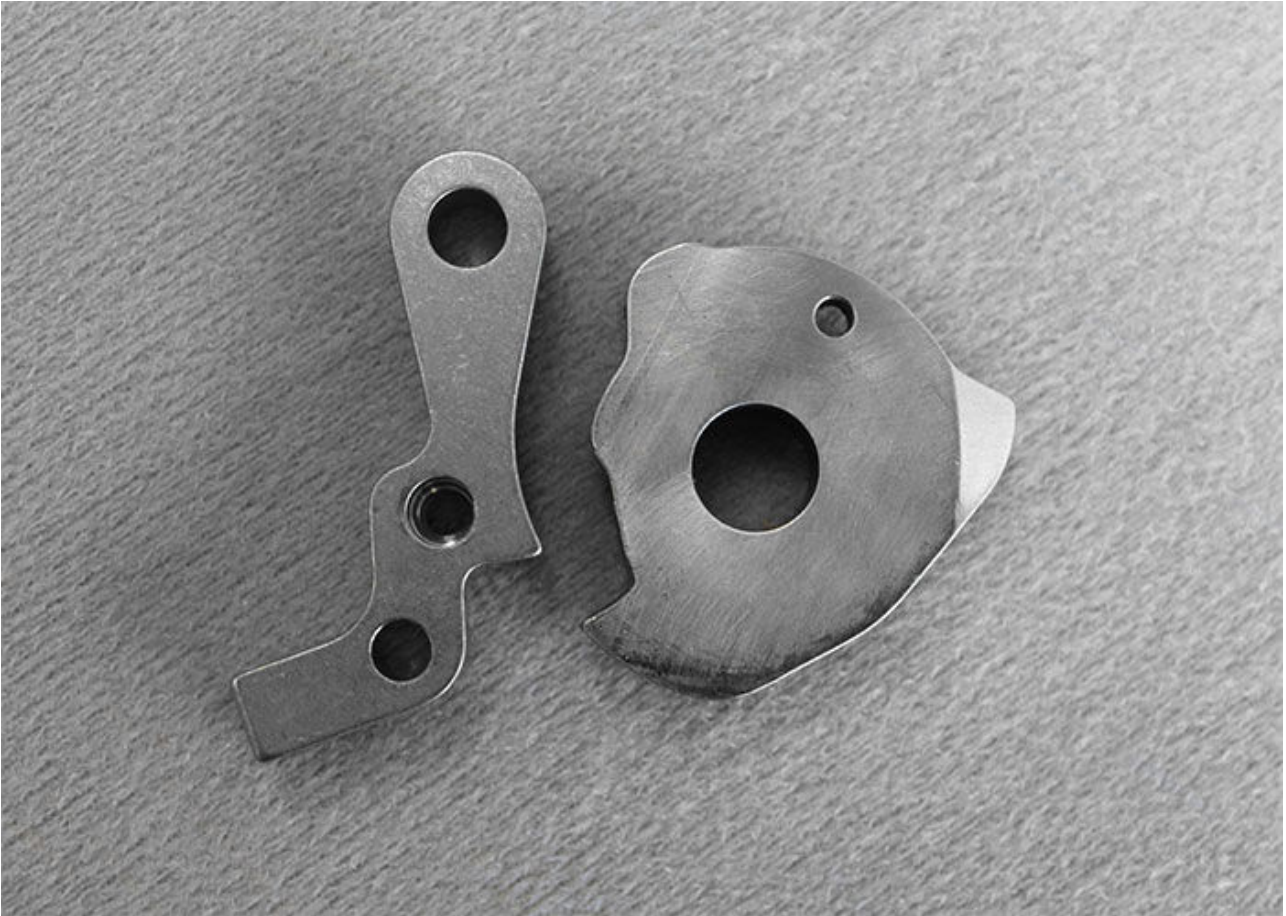


- damaged sliding washer
- worn out bearing nut
- worn out screw



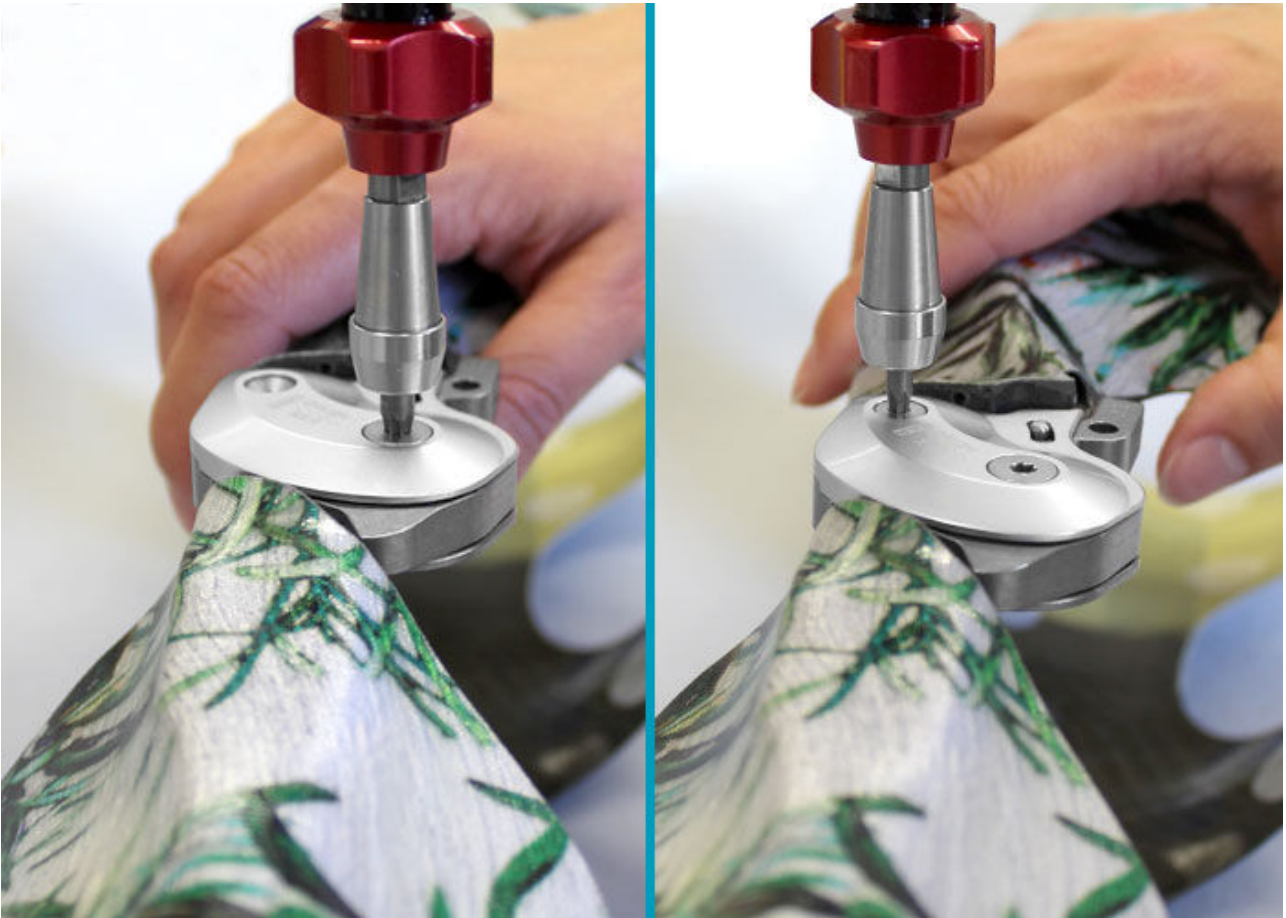
- worn out step lock gearing

The step lock pawl and step lock stop disc must always be exchanged together.



- worn out locking components

If there is play, the locking pawl has to be exchanged for the next longer one (see also instructions for use).



Please note the online tutorials for the joint assembly of the locked system knee joints in order to reassemble the system joint.

FIOR & GENTZ

Gesellschaft für Entwicklung und Vertrieb
von orthopädietechnischen Systemen mbH

Dorette-von-Stern-Straße 5
21337 Lüneburg (Germany)

+49 4131 24445-0
+49 4131 24445-57

info@fior-gentz.de
www.fior-gentz.com

